



Corning | Mount Ayr | Stanton

# Southwest lines

A monthly publication for members of Southwest Iowa Rural Electric Cooperative

May 2021

## 2021 Annual Meeting Plans

Plans are being made for this year's Annual Meeting. Southwest Iowa Rural Electric Cooperative's Annual Meeting is scheduled to be held at the Lenox Community Center on Thursday, September 9, 2021. The general business session will be called to order at 6:30 p.m. In addition to reports being presented that cover our 2020 operations, a major item of business will be the election of four directors to serve one three-year term each. Directors whose terms expire at the Annual Meeting in September are:

- Region 1, District #1 – Jason Smith
- Region 1, District #3 – Dale Walkup
- Region 2, District #5 – Deena Moore
- Region 2, District #7 – Dana Morgan

A nominating committee will be named at the May board meeting and given the task of nominating qualified candidates to run for each of these positions. Once the slate of candidates is chosen, members will be given the opportunity to vote by mail or at the Annual Meeting on September 9th. A detailed explanation of the nominating and election process will be provided in the next newsletter. If you are interested in being considered to serve on the nominating committee this year, please contact Phil Kinser at (888) 220-4869.

## New Hires



Brycen Wallace

### Brycen Wallace

Apprentice Lineman, Brycen Wallace, started on April 1st at the Corning location. Brycen is from Greenfield, Iowa and graduated from Minnesota West Community

and Technical College Linemen School in May 2020. He was a summer intern for SWIAREC in 2020. He says, "I appreciate being outside and am excited to continue learning alongside the crew." Welcome Brycen!

### Brady Williams

Apprentice Lineman Brady Williams, started on April 1st at the Stanton location. Brady is from Clarinda, Iowa and graduated from Metropolitan Community College



Brady Williams

Linemen School. Brady was a summer intern for SWIAREC in 2020. He says "I am eager to get to work with a line crew that helps to make the job fun, and can't wait to meet more of our members." Welcome Brady!



Our offices will be closed Monday, May 31st in observance of Memorial Day.

CEO's COMMENTS:

# Safety is as simple as **A B C**: Always Be Careful

**W**e all want the best for the people in our lives – our family, friends, community and others. That includes you, our members.

It's why we make safety a top priority at Southwest Iowa REC and devote time and energy to making everyone aware of important safety tips and equipment.

For instance, if you're working with tall ladders, cleaning gutters, trimming trees or undertaking other projects outside, we remind you to look up for and stay safely away from overhead power lines, especially those connected to your home.

If a project involves digging, be sure to call 811 a few working days in advance to get underground utilities marked.

We don't want anyone to take a chance that could end in tragedy, and to help, we're a partner in the Safe Electricity program. We encourage you to visit [SafeElectricity.org](http://SafeElectricity.org), where you'll find life-saving information presented in videos, interactive games for children, online teacher resources and more.

We are proud to have the safest, most reliable electric system of any country in the world, but we are not content to simply rest on these accolades. We will continue to provide our members with the latest advice and technology to use electricity in safer and smarter ways. After all, aren't you and the people you care about worth it? We think so. In fact, we know so.



Phil Kinser

Have a great, safe day!

## Reduce Energy Use During Peak Hours

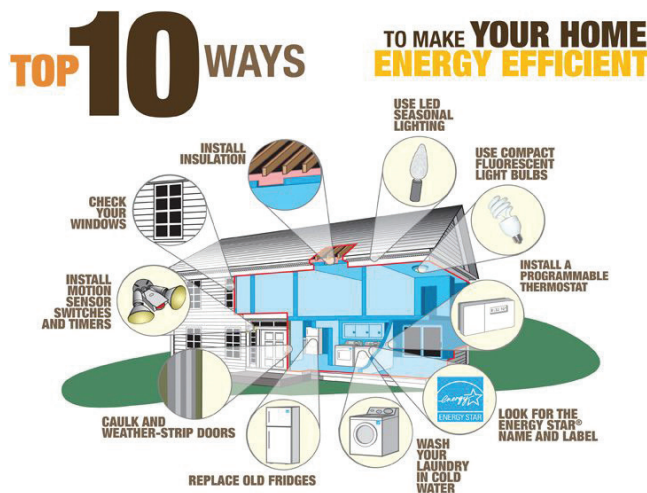
**P**eak hours are the busiest times for your local electric cooperative, since many people are using electricity at the same time. In addition, it costs your co-op more to generate electricity when demand soars during peak periods – and the cost of your electricity also may rise. Obviously, using less electricity during peak periods can save your co-op – and you – money.

Here's how you can help during peak hours, which generally are on the hottest summer days between 4 p.m. and 9 p.m.:

- Shift household chores and activities away from peak periods. Wait to run your dishwasher until you go to bed, for instance.
- If you have air conditioning, turn the thermostat up when you are gone and

at night. Cool only the rooms that you are using.

- Use the most energy-efficient appliances you have. Your microwave oven, for example, uses considerably less energy than your stove or cooktop.
- If you're buying a new appliance, make sure you get a highly efficient one. Look for ENERGY STAR® labels when you're evaluating different models.
- Be aware of your energy consumption, and try to get in the habit of using energy efficiently year-round.



Use the energy you need, but use it wisely! You'll help your co-op avoid building expensive new power plants – and that, in turn, will help keep your electric rates stable.

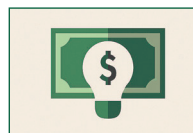
## HEAT PLUS METER READINGS



The Heat Plus rate season will end May 31, 2021. It is important that members do not turn off power to those meters because we still need to be able to read them each month. The Heat Plus rate will begin again on October 1, 2021.



## Bill Credit Opportunity!



Please fill out our member survey to be receive a \$10 bill credit and to be entered to win one of 2 \$100 bill credit!

Survey can be found at:

<https://www.surveymonkey.com/r/RZTDMK>  
or pick one up at your local office!



## Clearance envelope for grain bins filled by permanently installed augers, conveyors or elevators

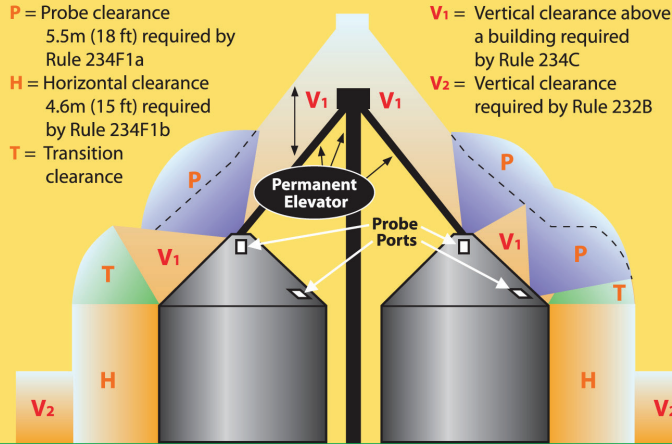
**P** = Probe clearance  
5.5m (18 ft) required by Rule 234F1a

**H** = Horizontal clearance  
4.6m (15 ft) required by Rule 234F1b

**T** = Transition clearance

**V<sub>1</sub>** = Vertical clearance above a building required by Rule 234C

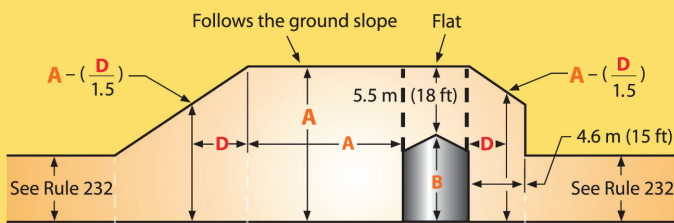
**V<sub>2</sub>** = Vertical clearance required by Rule 232B



From IEEE Std. C2-2017, "National Electrical Safety Code." © Copyright 2016 by IEEE. All rights reserved.

## Clearance envelope for grain bins filled by portable augers, conveyors or elevators

### ELEVATION



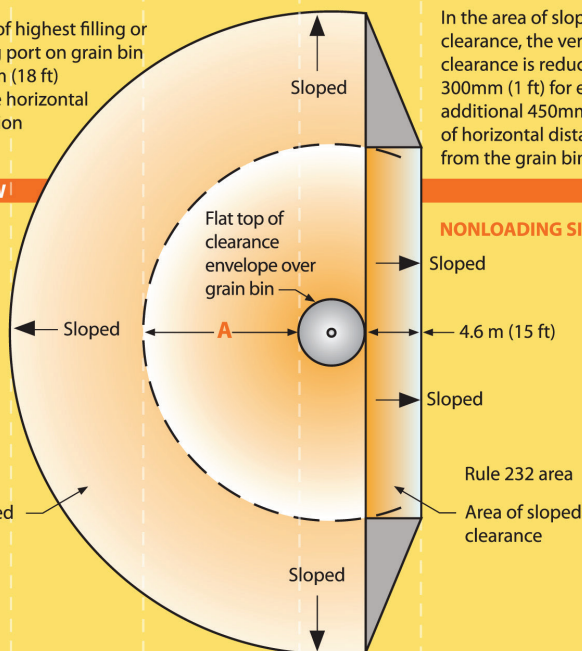
**B** = Height of highest filling or probing port on grain bin  
**A** = B + 5.5m (18 ft)  
**D** = Variable horizontal dimension

In the area of sloped clearance, the vertical clearance is reduced by 300mm (1 ft) for each additional 450mm (1.5 ft) of horizontal distance from the grain bin.

### PLAN VIEW

#### LOADING SIDE

See Rule 232  
Area of sloped clearance



#### NONLOADING SIDE

Sloped  
4.6 m (15 ft)  
Sloped  
Rule 232 area  
Area of sloped clearance  
Sloped

From IEEE Std. C2-2017, "National Electrical Safety Code." © Copyright 2016 by IEEE. All rights reserved. The IEEE disclaims any responsibility or liability resulting from the placement and use in the described manner.

*Disclaimer: These drawings are provided as part of Iowa electric cooperatives' annual public information campaign and are based on the 2017 Edition of the National Electrical Safety Code. To view the actual drawings, refer to that publication. Every care has been taken for the correctness of the contents for these drawings. However, the Iowa Association of Electric Cooperatives and its member cooperatives accept no liability whatsoever for omissions or errors, technical inaccuracies, typographical mistakes or damages of any kind arising from the use of the contents of these drawings, whether textual or graphical.*

## Maintain proper clearance around grain bins

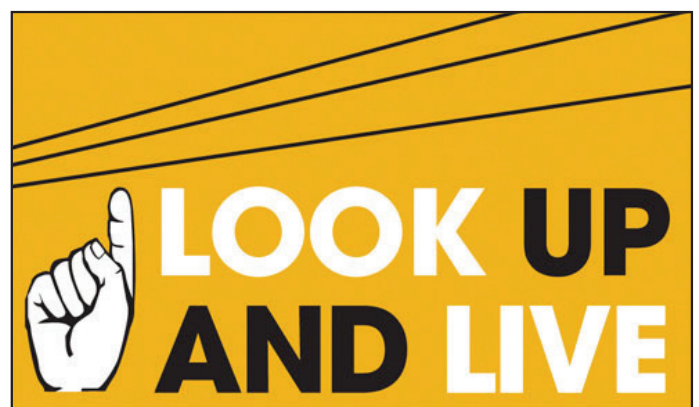
When you start to plan for a new grain bin, please contact Southwest Iowa REC.

Southwest Iowa REC will provide assistance in planning for a safe environment for everyone working and living around grain bins. The State of Iowa requires specific clearances for electric lines around grain bins, with different standards for those filled by portable and permanent augers, conveyors and elevators.

The drawings on this page show the specific clearances required for both scenarios. If you have any questions concerning the drawings, please contact Southwest Iowa REC.

According to the Iowa Electric Safety Code found in Iowa Administrative Code Chapter 199 -- 25.2(3) b. *An electric utility may refuse to provide electric service to any grain bin built near an existing electric line which does not provide the clearances required by the American National Standards Institute (ANSI) C2-2017 "National Electrical Safety Code," Rule 234F. This paragraph "b" shall apply only to grain bins loaded by portable augers, conveyors or elevators and built after September 9, 1992, or to grain bins loaded by permanently installed augers, conveyors, or elevator systems installed after December 24, 1997.* (As adopted by the Iowa Utilities Board)

Southwest Iowa REC is required by the Iowa Utilities Board to provide this annual notice to farmers, farm lenders, grain bin merchants, and city and county zoning officials. If you have any questions concerning clearance regulations, please call Southwest Iowa REC.



## Board Approves Patronage Allocation

In March, the Board of Directors allocated margins for 2020. Margins are the “bottom line” on our financial operating statement when all the expenses of providing electric services to our member-owners are deducted from the revenues taken in. After the annual independent audit of the books, these margins are allocated to the various reserve accounts and also as patronage capital to the member-owners who received service from the Cooperative during the year the margin was created.

For 2020, margins of \$577,146.74 will be allocated to the member-owners based upon the amount each paid for electricity in proportion to what the other member-owners paid. The payment of patronage capital is deferred until a future point in time when the financials of the Cooperative allow a refund. Member-owners who purchased electricity from us in 2020 should receive a patronage allocation notice in the mail in late May or early June.

## Chicken Salad Croissant Sandwiches

*Flavorful chicken salad stuffed between buttery, soft croissant rolls. It makes for one delicious sandwich. Great for left over chicken, and for meals on the go!*

- 4 cups cooked shredded chicken
- 1 1/2 cups chopped celery
- 1 1/2 cups red grapes halved
- 2 green onions thinly sliced
- 1 cup mayonnaise
- 1/4 cup sour cream or ranch dressing
- 2 Tablespoons fresh dill chopped
- 1 teaspoon black pepper
- 1 teaspoon salt
- juice of 1 small lemon
- 8 Croissant rolls

1. Add the cooked shredded chicken, celery, grapes and green onion to a large bowl. Toss to combine. Set bowl aside.
2. In a small bowl, add the mayonnaise, sour cream, chopped dill, pepper, salt and lemon juice. Whisk together until combined. Pour the dressing over the chicken mixture. Stir until combined.
3. Cover and refrigerate at least 4 to 6 hours or overnight.
4. Slice each croissant roll in half. Spread 1/2 cup of chicken salad over bottom half. Top with the other half. Serve and enjoy!



**SAFETY  
FIRST,  
SAFETY  
ALWAYS**

**MAY IS ELECTRICAL  
SAFETY MONTH**

**DANGER**



**ELECTRICAL HAZARD**



Like us on Facebook

### Energy Efficiency Tip of the Month



Avoid placing items like lamps and televisions near your thermostat. The thermostat senses heat from these appliances, which can cause your air conditioner to run longer than necessary.

Source: [www.energy.gov](http://www.energy.gov)

**2021 Energy Efficiency & Beneficial Electrification Program Delivery Costs = \$.0030/kwh**



Find us on  
**Facebook**

**Corning**  
1801 Grove Ave., Corning, IA 50841  
**Mount Ayr**  
1502 W. South St., Mount Ayr, IA 50854  
**Stanton**  
415 Broad Ave., Stanton, IA 51573  
**Phone Number: (888) 220-4869**

**Board of Directors**  
Marilyn Werner, President Phil Kinser, CEO  
Mark Herzberg, Vice President  
Ken Peppmeier, Secretary  
Kay Fast, Treasurer  
Fred Hossle Deena Moore  
Dana Morgan Terry Barnes  
Jason Smith Dale Walkup