



Corning | Mount Ayr | Stanton

Southwest lines

A monthly publication for members of Southwest Iowa Rural Electric Cooperative

February 2021

CIPCO Purchasing 100% of Power from Wapello Solar

Southwest Iowa REC's power supplier, Central Iowa Power Cooperative (CIPCO), will purchase 100 percent of the power from Wapello Solar. According to Clēnera, the company developing Wapello Solar in southeast Iowa, it is currently the largest solar project in Iowa. Anticipated to begin generating low-cost energy to CIPCO Member-owners like Southwest Iowa REC during the early, coldest months of 2021, Wapello Solar can actually use those frigid temps to their advantage: solar panels are more efficient at converting sunlight into electricity when they can remain cool.

Because roughly one-third of the year is spent with limited daylight hours, the solar panels at Wapello Solar are bifacial, meaning they have a back layer of transparent glass to give them the ability to utilize the sunlight reflected onto the rear side of the panel as well as the traditional front panels. At Wapello Solar, using bifacial panels results in roughly seven percent additional annual energy generation, and makes the panels sturdier.

Because bifacial modules have glass both front and back, they have enhanced durability. These panels are designed to operate in temperatures as low as -40 degrees Fahrenheit and withstand wind speeds up to 105 miles per hour, according to Clēnera.

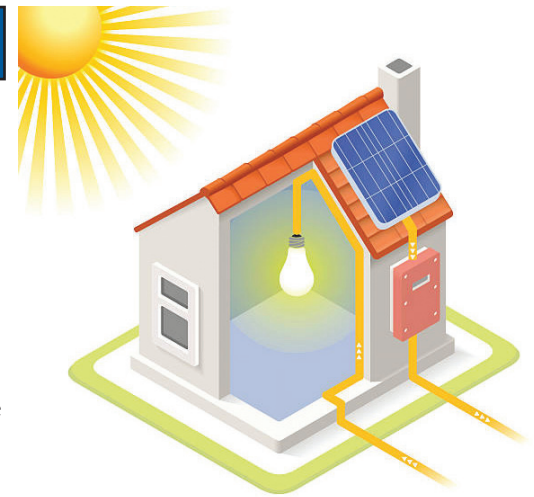
And because Wapello Solar is located in Iowa, blizzards and ice storms come with the territory. While the front face of the panels

will warm enough to melt away most of the snow or ice, the snow that collects on the ground can also contribute to the energy generation output at Wapello Solar.

Snow substantially increases the ground reflectivity, meaning an even higher percentage of sunlight will be reflected onto the backside of the solar panels. In this way, the bifacial panel allows for some electricity generation from the solar array even when the panels may be completely covered in snow.

As for maintenance throughout the winter, crews will monitor snow accumulation around the panels to make sure they aren't being impacted and clear any excess snow. Clēnera is able to monitor the site performance remotely and can detect any issues that arise that the maintenance crew may not catch. The trackers have sensors to inform the trackers when the accumulation of snow on the modules reaches 10 pounds per square foot or more.

Located on approximately 650 acres in Louisa County and served by Central Iowa Power Cooperative (CIPCO) Member-owner Eastern Iowa Light & Power, Wapello Solar is currently the largest solar project in Iowa and is anticipated to generate 100 MW annually. CIPCO will purchase 100 percent of the power for 25 years from Wapello Solar.



Scholarships Reminder



Southwest Iowa REC will once again be offering scholarships for the 2020-2021 school year to graduating high school seniors.

We will be awarding fourteen (14) \$500 scholarships. In addition, three (3) \$1,000 scholarships will be available for students planning to attend an Accredited Lineman School or electrical trade program.

Completed applications and a photo must be received at the REC Office by March 2, 2021 to be eligible.

What is Beneficial Electrification?

If you're like most Americans, you're interested in saving money on energy costs and in doing your part to help the environment. But wouldn't it be great if you could do both? Well, you can! It's through a concept called "beneficial electrification." This utility industry term means the innovations in energy technologies are creating new ways to use electricity instead of on-site fossil fuels, such as propane, natural gas and fuel oil, in a way that reduces overall emissions and energy costs.

In essence, by virtue of being plugged into the grid, the environmental performance of electric devices improves over time. As Southwest Iowa REC and other utilities shift to more options that include renewable energy sources to make existing generation technologies cleaner, electricity will require less fossil fuel per kilowatt-hour of energy produced.

So, here's how this concept impacts you. It means that electric appliances such as your heat pump, water heater, clothes dryer, and oven have the potential to become greener. When Southwest Iowa REC takes advantage of advances in technology and the market at the generation point (how the electricity is produced), it means those efficiencies are inherently passed along to you, the consumer-member.

Electricity is getting cleaner.

Because large appliances have a typical lifespan of 10 years or longer, it means that you are able to benefit from the flexibility of the grid in addition to the increased efficiency of the particular appliance. In other words, the high efficiency electric oven you have today could be powered by renewable sources in the near future. This would not be the case with gas appliances where you are essentially locked into the technology of that gas appliance for the

10+-year lifespan.

As Southwest Iowa REC is able to tap into more renewable options in the future, your electric appliance has the potential to become greener and more energy efficient. The only way you would be able to benefit from this trend is through an electric appliance.

Small steps to help the environment

For consumers and homeowners looking for more environmentally-friendly options, choosing electric appliances, tools and cars over those powered by fossil fuels is an easy solution. Whether through electric lawn mowers, blowers and weed whackers (plug-in or rechargeable) or through electric water heaters and other appliances, beneficial electrification is a means to reducing greenhouse gases and helping our environment. It can also translate into a better quality of life. For example, when you can trade the loud rumble of a gas-powered mower or blower for the quiet efficiency of electric versions, you eliminate the exhaust emissions and the unpleasant noise.

How we're doing our part to help the environment

As the overall energy sector continues to evolve, Southwest Iowa REC is striving to take advantage of the advances in technology and the opportunities of the market as they become available. This means Southwest Iowa REC can leverage the flexibility of the grid to offer a wider range of renewable power selections as we continue to bring safe, reliable and affordable power to our community.

We also promote energy efficiency through programs like our Pull the Plug appliance recycling program. Call our toll-free Pull the Plug hotline at (855) 838-7817 to request collection and recycling of your old, working refrigerator, freezer

or window air conditioner; up to three operable units per address. Pick up and recycling is done

by the cooperative's contractor. You will also receive a rebate for each appliance as follows: Refrigerator \$35/unit, Freezer \$25/unit, Window Air Conditioner \$25/unit. Another excellent source of energy efficiency information is the WATTS \$MART newsletter. Learn more about green living and energy-efficiency tips through WATTS \$MART, an electronic newsletter full of useful money-saving tips, including an energy usage calculator. Contact Southwest Iowa REC to start receiving WATTS \$MART each month in your inbox. In addition, through SmartHub, we offer our members the convenience and ability to manage and monitor their energy use. To save you money, we also offer rebates for energy efficient appliances such as heat pumps, air conditioners, water heaters, and even electric vehicle chargers. To learn more, visit our website www.swiarec.coop/content/rebates or call (800)220-4869.

We care about our community because we live here too. I hope you'll reach out to Southwest Iowa REC, your trusted energy partner, to discuss available beneficial electrification options and to learn about more ways to reduce your energy use. Because when you participate in the energy efficiency programs and incentives we offer, you're doing your part to save energy and better our environment. While each member's reduction might be small, together, they can lead to significant savings of money and emissions. And that means a brighter future for all of us.



Tim Pfeiffer, Director of Member Services

Your Privacy is Important

At Southwest Iowa REC, we recognize that a key element of the member-cooperative relationship is the trust that you place with us to respect the privacy and confidentiality of your personal information. We are committed to providing you with the highest quality of electric service. While personal information about you is fundamental to our ability to do this, your privacy is also very important to us.

Therefore, Southwest Iowa REC will not disclose to non-affiliated third parties any information, including personal financial or consumption histories, without the expressed consent of the member/consumer. The Cooperative does reserve the right to use information for purposes relevant to prudent engineering and design practices and power procurement practices, which are consistent with the industry requirements, and for the betterment of the Cooperative and its membership, as a whole.

We restrict access to non-public personal information for all member-consumers to only those employees or affiliates who need to know specific information to provide products and services to the member/consumer. We maintain physical, electronic and procedural safeguards that, to the best of our abilities, provide prudent and sufficient protection for all non-public personal information.

Information shall not be released to any third party until such time as the member/consumer approves, in writing, such authorization. Forms for the release of information may be obtained from the Cooperative office.

Southwest Iowa REC may collect non-public personal information from the following:

- a. Information we receive from you on applications or forms.
- b. Information regarding payment histories, consumption history, demand history or capacity requirements.

CRIME
STOPPERS
800-452-1111
STOP COPPER THEFT!



How much will you save?

Did you know replacing your heating system with an electric heat pump can save you nearly \$1,000 per year on your heating and cooling bills?

Learn more!

Bravo!

Dear Southwest Iowa REC,
Thank you for repairing my
security light so promptly.

-Daisy Brown



Broccoli Cheddar Soup

- ½ cup onion, chopped
- ¼ cup butter
- ¼ cup flour
- ½ teaspoon salt
- 4 cups milk
- 2 cups cheddar cheese, shredded
- 10 ounces frozen broccoli, cooked, drained and chopped

Saute onion in butter. Blend in flour and salt; gradually add milk and cook, stirring constantly until thickened. Add cheese and broccoli, stir until cheese is melted. Servings: 6 (one cup each)

This month's extra recipe was submitted by Linda Cox, of Leon. It was chosen to be in the January edition Living with Energy in Iowa magazine. If you are interested in submitting a recipe, please send to:

*Recipes
Living with Energy in Iowa
8525 Douglas Ave., Suite 48
Des Moines, IA 50322*

*If your entry is selected, you will win a \$25 bill credit! Congratulations Linda!
You can find the latest issue of Living with Energy in Iowa on our website,
www.swiarec.coop/content/newsletter along with more recipes!*



February 15, 2021



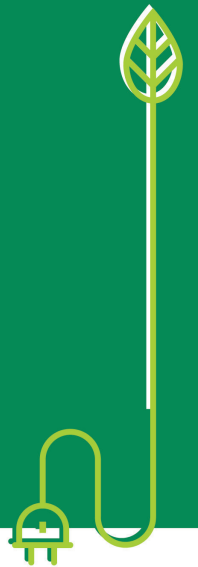
Like us on Facebook

Energy Efficiency Tip of the Month

Use wool or rubber dryer balls in the clothes dryer to reduce drying time and static.

Wool dryer balls can also absorb extra moisture. These are an efficient alternative to dryer sheets, which can create buildup on the dryer's filter and reduce air circulation. If you prefer dryer sheets, scrub the filter once a month to remove buildup.

Source: www.energy.gov



2020 Energy Efficiency & Beneficial Electrification Program Delivery Costs = \$.0029/kwh



Corning
1801 Grove Ave., Corning, IA 50841

Mount Ayr
1502 W. South St., Mount Ayr, IA 50854

Stanton
415 Broad Ave., Stanton, IA 51573

Phone Number: (888) 220-4869

Board of Directors

Marilyn Werner, President Phil Kinser, CEO

Mark Herzberg, Vice President

Ken Peppmeier, Secretary

Kay Fast, Treasurer

Fred Hossle Deena Moore

Dana Morgan Terry Barnes

Jason Smith Dale Walkup

Southwest Iowa REC is an equal opportunity provider and employer.