

**CIPCO**  
CONNECTIONS  
**2020**





**Bill Cherrier**  
Executive Vice  
President & CEO

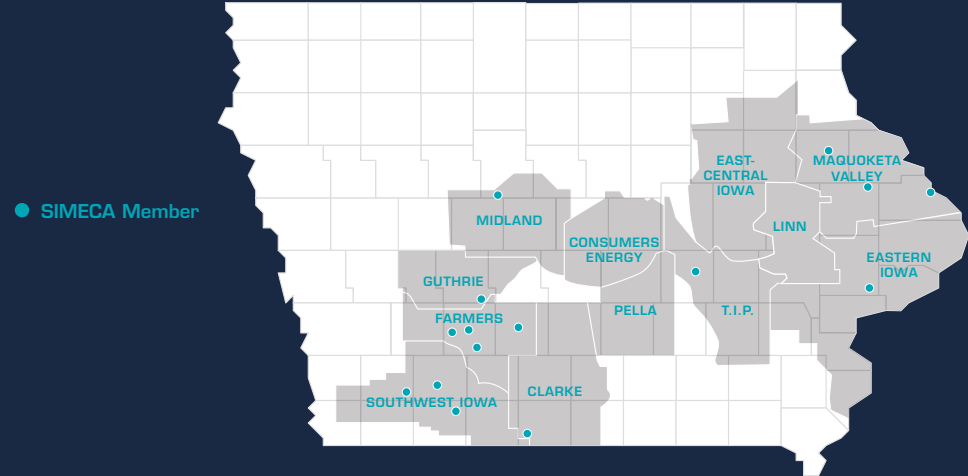
Central Iowa Power Cooperative (CIPCO) is a generation and transmission cooperative built by 13 member cooperatives and associations, together with the people they serve in 58 counties across Iowa. Our mission is to provide member-owners with wholesale power and services in a safe, reliable and cost-effective manner. Through our balanced, 24/7 energy portfolio, we provide energy to help power our communities, our state and our economy.

## BY THE NUMBERS

Energy sales	3.04 million MWh
Operating revenue	\$192 million
Net margin	\$1.5 million
Total assets	\$804 million
Average system rate	59.95 mills/kWh
Miles of transmission lines	1,927

*CIPCO and its member systems serve approximately 54% of the rural electric cooperative meters in Iowa. 2018 CIPCO data*

## SERVICE TERRITORY



Clarke Electric Cooperative  
Osceola  
David Opie, (800) 362-2154  
[www.cecnet.net](http://www.cecnet.net)

Consumers Energy  
Marshalltown  
Jim Kidd, (800) 696-6552  
[www.consumersenergy.coop](http://www.consumersenergy.coop)

East-Central Iowa REC  
Urbana  
Steve Marlow, (877) 850-4343  
[www.ecirec.coop](http://www.ecirec.coop)

Eastern Iowa Light & Power  
Wilton  
Kirk Trede, (800) 728-1242  
[www.easterniowa.com](http://www.easterniowa.com)

Farmers Electric Cooperative, Inc.  
Greenfield  
Charles Dunn, (800) 397-4821  
[www.farmersrec.com](http://www.farmersrec.com)

Guthrie County REC  
Guthrie Center  
Cozy Nelsen, (888) 747-2206  
[www.guthrie-rec.coop](http://www.guthrie-rec.coop)

Linn County REC  
Marion  
Terry Sullivan, (319) 377-1587  
[www.linncountyrec.com](http://www.linncountyrec.com)

Maquoketa Valley Electric Cooperative  
Anamosa  
Jeremy Richert, (800) 927-6068  
[www.mvec.coop](http://www.mvec.coop)

Midland Power Cooperative  
Jefferson  
Bill McKim, (800) 833-8876  
[www.midlandpower.coop](http://www.midlandpower.coop)

Pella Cooperative Electric Assn.  
Pella  
Jon Miles, (800) 619-1040  
[www.pella-cea.org](http://www.pella-cea.org)

Southwest Iowa REC  
Corning  
Phil Kinser, (888) 220-4869  
[www.swiarec.coop](http://www.swiarec.coop)

T.I.P. Rural Electric Cooperative  
Brooklyn  
Dean Huls, (800) 934-7976  
[www.tiprec.com](http://www.tiprec.com)

**Bellevue Municipal Utilities**  
Jamie Haxmeier, (563) 872-3357

**Durant Municipal Electric Plant**  
Tami Allison, (563) 785-6213

**Greenfield Municipal Utilities**  
Scott Tonderum, (641) 743-2914

**Stuart Municipal Utilities**  
Pat Howey, (515) 523-2915

**Brooklyn Municipal Utilities**  
Troy Meldrem, (641) 522-9292

**Earlville Municipal Utilities**  
Jake Harris, (563) 923-3365

**Lamoni Municipal Utilities**  
Jon Barney, (641) 784-6911

**Villisca Municipal Power Plant**  
Kyle Yates, (712) 826-3192

**Cascade Municipal Utilities**  
Shontele Orr, (563) 852-3614

**Fontanelle Municipal Utilities**  
Amanda Held, (641) 745-3961

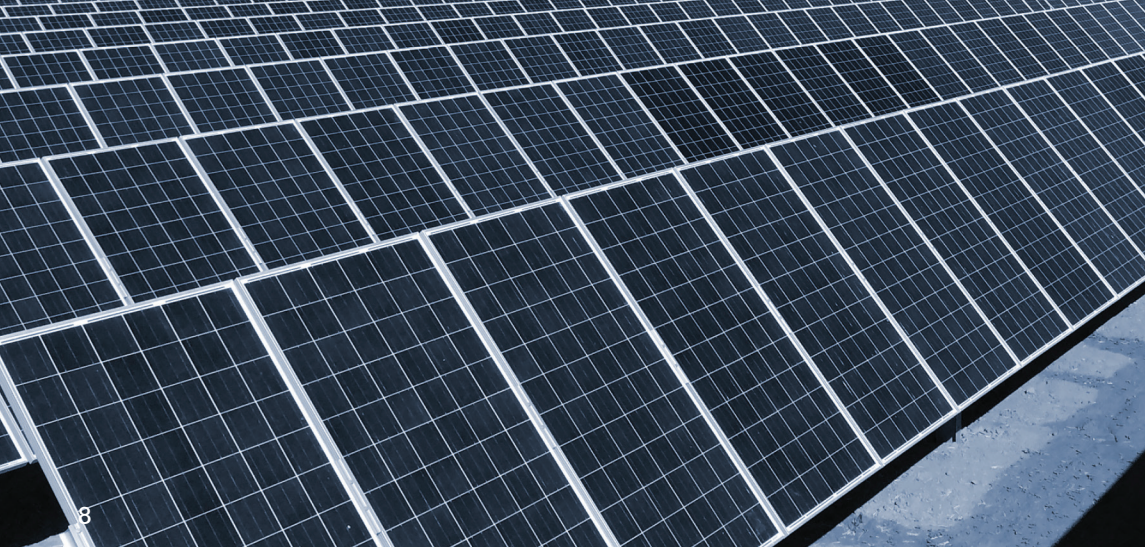
**Lenox Municipal Utilities**  
John Borland, (641) 333-2550

**Winterset Municipal Utilities**  
Chuck Johnson, (515) 462-2152

**Corning Municipal Utilities**  
Tim Larsen, (641) 322-3920

**Gowrie Municipal Utilities**  
Chuck Angstrom, (515) 352-3065

**Orient Municipal Utilities**  
Gary Lowe, (641) 337-5711



## Wapello Solar

CIPCO, working with Clēnera, LLC, is developing the largest solar project in Iowa, and one of the largest in the Midwest. When complete later this year, the 100-megawatt Wapello Solar will spread across 800 acres in Louisa County and will incorporate the latest in solar array technology to provide cost-effective electric energy. CIPCO will purchase 100% of the energy and capacity output for 25 years. Clēnera will operate Wapello Solar and will retain all associated renewable energy credits.

# REPOWERING WITH NEW TECHNOLOGY

## Summit Lake Generating Station

CIPCO's \$85 million investment to repower the natural gas-fired Summit Lake Generating Station in Creston is moving forward. Demolition is complete on the existing transmission and administration buildings along with the diesel plant. The old north substation has been removed and groundwork for the new facility has begun. When complete in late 2022, the facility will house 60 MWs of efficient natural gas-fired reciprocating engines, a new operations and dispatch center, and substation upgrades. This complements CIPCO's expansion of intermittent wind and solar resources with dispatchable, quick-start natural gas capacity.



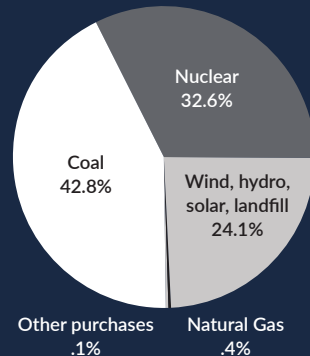


## A balanced portfolio of energy sources

CIPCO is committed to providing environmentally-friendly energy through a diverse mix of nuclear, wind, hydro, solar, landfill gas, natural gas, coal and oil energy resources. Nearly 60% of our generation is carbon-free.\*

*All or some of the renewable energy credits associated with the generation may have been sold or may be sold in the future to other parties.*

2018 Sources of Energy



## GENERATION FACILITIES

**Hydroelectric**  
Western Area Power Administration

**Wind**  
Hancock County Wind Energy Center, Garner  
Elk Wind Farm, Greeley  
Hawkeye Wind Farm, Hawkeye  
Rippey Wind Farm, Grand Junction  
Pioneer Grove Wind Farm, Mechanicsville  
Heartland Divide Wind Energy Center,  
Audubon & Guthrie counties

**Natural Gas & Oil**  
Summit Lake, Creston

**Nuclear**  
Duane Arnold Energy Center, Palo (closes in 2020)

**Coal**  
Louisa Generating Station, Muscatine  
Walter Scott, Jr., Energy Centers #3 & #4,  
Council Bluffs

**Landfill Gas**  
Linn County Solid Waste Agency, Marion

**Solar**  
Clarke Solar Farm, Osceola  
ZON VELD (Sun Field), Pella  
Marshalltown Gateway Centre Solar Array,  
Marshalltown  
Urbana Solar Acres, Urbana  
Eastern Iowa Solar, Wilton  
Southwest Solar, Corning



### **Protect the reliability of electric transmission and distribution**

Iowa's electric cooperatives take seriously our responsibility to safely and reliably serve our member-consumers. We ask the Legislature to defend Iowa's service territory laws from being infringed upon while prioritizing further investments by incumbent utilities to ensure that Iowans continue to receive safe, reliable and affordable power.

### **Continue commitment to safety for everyone**

Since the 1940s, Iowa's electric cooperatives have demonstrated their commitment to safety to ensure employees return home at the end of the day. RECs support legislation that keeps our member-consumers, our employees and the general public safe from intentional or accidental contact with power lines.

### **Support rural Iowa infrastructure and communities**

As proven pillars of the communities we serve, Iowa's electric cooperatives will continue to support rural economic development opportunities through the State and Federal programs including regulatory, tax and grant programs that improve the ability of our neighbors to gain access to housing, employment and broadband connectivity.

### **Enhance energy storage options: The EASE Act**

Energy storage can assist the technical problems caused by fast fluctuations of energy delivered to the grid from renewable resources. Energy storage is particularly useful in rural areas dealing with overloaded transmission systems. We recommend the passage of the EASE Act to support electric cooperatives pursuing energy storage projects.

# POWERING ECONOMIC DEVELOPMENT



CIPCO and our member systems support the economic prosperity of Iowa's rural communities by attracting companies to the local areas we serve and helping power their growth through flexible, low-cost financing assistance. In addition, our investments in energy infrastructure create millions of dollars in financial capital to help power Iowa's economy.

**CIPCO has helped fund 60 rural development projects.**

In 2019:

**Grip-Tite Manufacturing**

\$1.2 million business expansion in Winterset, served by Winterset Municipal.

**Rural Economic Development Loan Program (REDL)**

Three new REDL projects were submitted to USDA in 2019 totaling \$6 million in investments.

Since 1997, more than \$24 million in loans have been provided, creating or maintaining 1,121 jobs and driving \$131 million of additional capital investment in Iowa.

In 2019, CIPCO donated nearly \$80,000 to support local community nonprofit organizations and programs doing important, community-based work throughout our members' service territories. Once again, we partnered with CoBank to make a gift of \$7,500 to the St. Luke's Foundation Rural Healthcare Grant Program. Additionally, our charity golf outing raised \$10,000 for Wildwood Hills Ranch of Iowa.



*In March 2019, T.I.P. REC and CIPCO donated \$7,500 toward the remodel and expansion of the Deep River Fire Station.*

## Other 2019 CIPCO donation recipients included:

University of Northern Iowa Enhancement Fund  
Deep River Fire Department  
Creston Chamber of Commerce  
Junior Achievement of Eastern Iowa  
Robins Civic Club  
Indian Creek Nature Center  
Celebration of Agriculture  
Greene County Animal Facility  
Iowa State Fair Blue Ribbon Foundation  
Big Brothers Big Sisters of Central Iowa  
Junior Achievement of Central Iowa  
Hawkeye on Safety  
Variety Club - The Children's Charity  
New Vienna Community Center  
Metro North Rotary

Midwest Flood Relief - Mills & Fremont counties  
Quad Cities Amateur Golf Tournament  
**CHARACTER COUNTS!**  
State Firefighter's Convention  
Iowa Sports Foundation  
Cedar-Wapsi Pheasants Forever  
Union County Fair  
Stanton Child Resource Center  
Wilton Athletic Boosters  
Iowa Barn Foundation  
PACE Apprenticeship Program  
Thank A Farmer  
SWCC Athletic Fundraiser  
Cedar Rapids Metro Disc Golf Association  
East Union Early Childhood Center

# COOPERATIVE DIRECTORS

*\*Indicates members of the CIPCO Legislative/Public Policy Committee*

The CIPCO Board of Directors is elected by their local member boards and guide organizational decision-making.



Gene Manternach\*  
22 Cascade



Duane Ver Ploeg  
Pella



Allen Albers  
Keystone



Paul Heineman\*  
Ogden



Marcel Fett\*  
Audubon



Kirk Hiland\*  
North Liberty



Gary Kester\*  
Burlington



Duane Armstead  
Greenfield



Arden Greiner  
Colo



Randy Rouse  
Allerton



Dale Walkup  
Redding



Dan Westphal\*  
Bridgewater



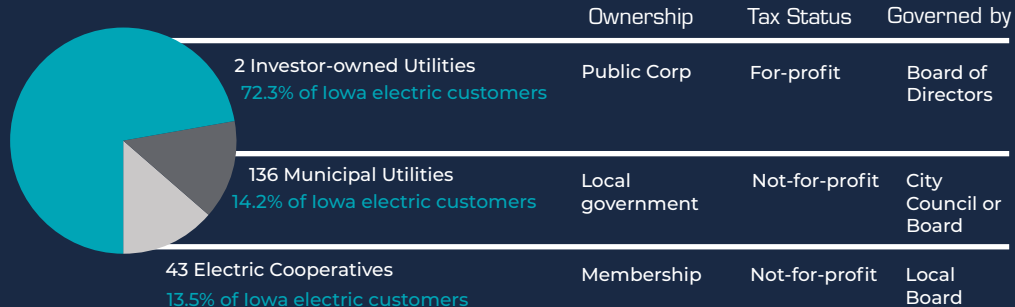
Craig Stallman  
Williamsburg

23

# HOW IOWA UTILITIES DIFFER

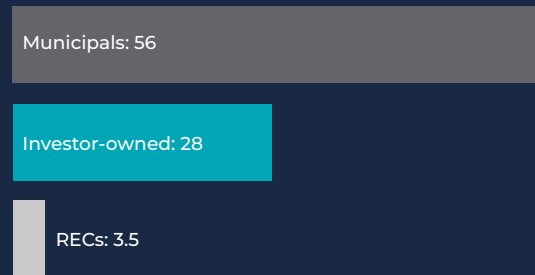
Reaching every customer, no matter how far away.

Iowans receive electric service from three types of utilities. Each Iowa utility has been assigned a defined service territory since 1977.

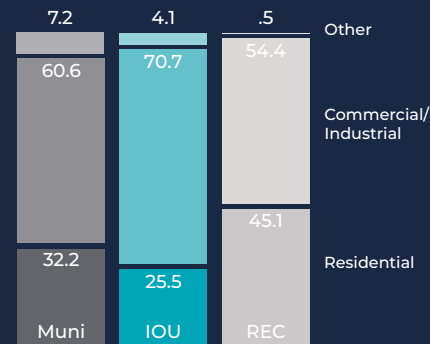


With dramatically fewer customers per mile of line, RECs are focused on reliability and cost efficiency.

Average number of customers per mile



kWh sales by type





Des Moines Office: 515-362-7699  
2600 Grand Ave. Suite 300, Des Moines, IA  
50312

Cedar Rapids Office: 319-366-8011  
1400 Highway 13 SE, Cedar Rapids, IA  
52403

[www.cipco.net](http://www.cipco.net)

