



Corning | Mount Ayr | Stanton

Southwest lines

A monthly publication for members of Southwest Iowa Rural Electric Cooperative

December 2020



The Employees and Directors of Southwest Iowa REC would like to wish you a Merry Christmas and Happy New Year! Thank you for your continued patronage and may you and your loved ones have a safe and enjoyable holiday season!

Employees

Cacey Quick
Danny Stamps
Duane Schafer
Les Helvie
Nathan Weeda
Sam Elsberry
Shayne Larson
Tanner Rinehart
Wendy Wimer

Luke Brockshus
David Head
Dustin Smith
Lucas Dalton
Paul Vanderholm
Sarah Newton
Steven Grace
Tim Pfeiffer
Zach Schafer

Bill Scharfenkamp
Denise Hallquist
Ken Van Wyhe
Marilyn Rubel
Phil Kinser
Scott Geer
Suzy Olson
Tysen Sederburg
Connor Giles

Directors

Terry Barnes
Kay Fast
Mark Herzberg

Fred Hossle
Deena Moore
Dana Morgan
Ken Peppmeier

Jason Smith
Dale Walkup
Marilyn Werner

COVID-19 UPDATE

ATTENTION!!! We have been taking all necessary precautions to assure the safety of our members, employees and communities during the Corona virus (COVID-19) outbreak. Once again, as of November 16th, our offices were temporarily closed to the public but staff is working and we will continue to serve your needs and process payments. We realize that many of our members will be affected by this pandemic emergency so we encourage you to contact us to discuss your situation and make payment arrangements. For updates and notifications, please visit our Facebook page, website (www.swiarec.coop) or call our offices (888-220-4869).

Southwest Iowa REC offices will be **CLOSED** Friday, December 25th for Christmas and Friday, January 1st for New Year's. ***Have a safe and happy holiday!***

Did you know?

Space heaters are responsible for 32 percent of house fires, according to the National Fire Protection Association.

- Place your space heater on a level, non-flammable surface.
- Make sure your space heater has an auto shutoff function.
- Never pair your space heater with an extension cord.
- Never leave a space heater unattended when in use.
- Purchase space heaters that are cool to the touch.



CEO's COMMENTS:

Why don't utilities bury more overhead power lines?

Across the country, we've experienced several natural disasters recently that have caused widespread outages – wildfires out west, hurricanes down south and a destructive derecho that swept through our own state in August. And, many of you will recall the devastating ice storms and tornadoes experienced in past years.

Following widespread or prolonged outages, folks often ask why electric utilities don't bury more overhead power lines to prevent future outage events. This question really boils down to the reliability and affordability of electric service.

Reliable service is our daily priority

First of all, you should know that your local electric cooperative works hard to maintain safe, reliable electric service to member-consumers. In fact, the five-year average reliability rating for Southwest Iowa REC is an impressive 99.98%. This means that from 2015 to 2019, your electric co-op kept the lights on for an average of 99.98% of the time, despite severe weather threats like blizzards, tornadoes, thunderstorms and ice storms. According to our five-year data, a member-consumer experiences one outage per year, lasting 84 minutes on average.



Maintaining affordable electricity

With extremely reliable service in place, decisions about burying power lines or building overhead usually come down to cost. In our local experience, sometimes the cost to bury infrastructure can be more expensive than building it overhead, depending on several variables like terrain and population density. Whatever option is selected, the costs ultimately need to be paid by co-op consumer-members.

For our service area and terrain, it's often cheaper and more cost effective for Southwest Iowa REC to maintain reliable service of overhead infrastructure through pole testing and vegetation management efforts and to locate strategic sections of the distribution system underground.

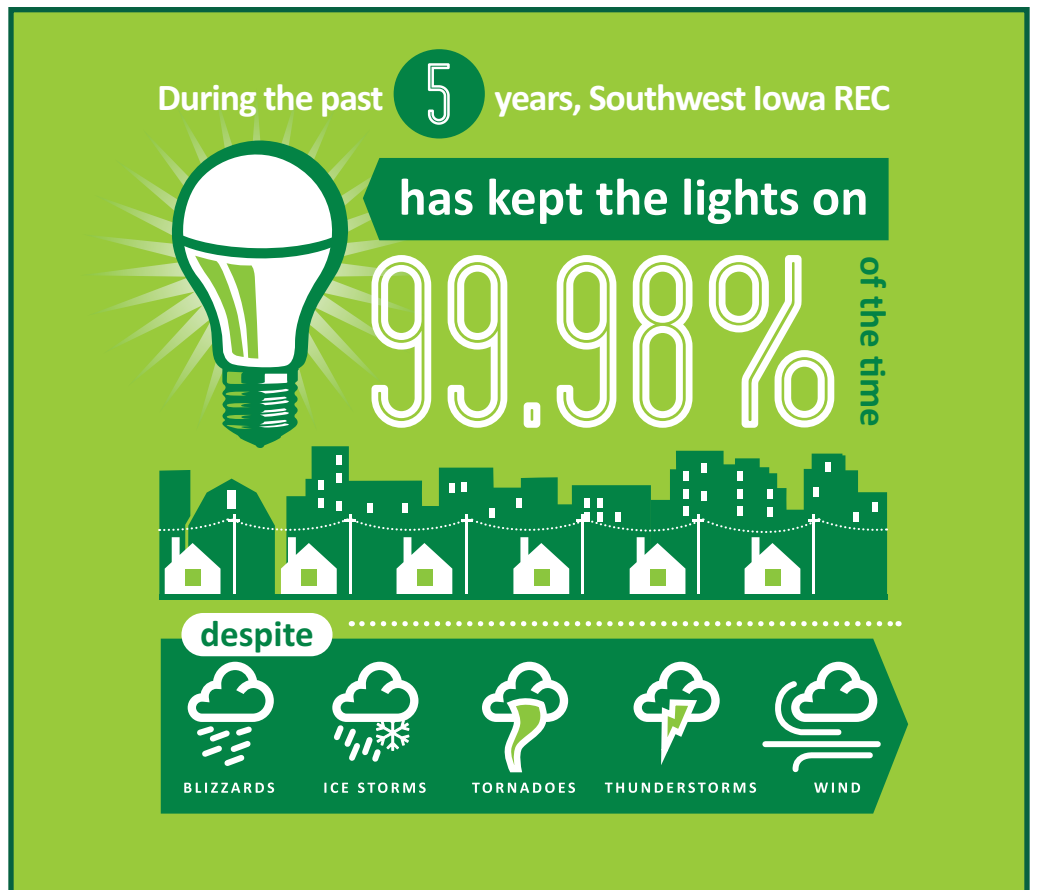
Local decision-making

Southwest Iowa REC considers several options and variables when reviewing ways to improve system reliability. Sometimes, your co-op will make the decision to bury strategic sections of power lines when it's feasible to do so.

Southwest Iowa REC's elected board of directors works diligently with cooperative employees to balance the reliability, affordability and safety of electric service to you. Because your co-op is owned and governed by the members it serves, our only priority is working for you and serving the needs of your community.



Phil Kinser



Operation Round-UP® Summary

Disbursements and pledges for the second half of 2019 throughout the first of 2020 from Southwest Iowa REC's Operation Round-UP® totalled \$31,725.00. This brings the total disbursements paid and/or pledged from Operation Round-UP® since its inception to \$250,343.

\$4,500.....Medical/Fire Emergencies – assist families with unusual expenses resulting from serious health problems and accident related injuries and those that have experienced personal property damage due to fire.

\$27,225.....Community Support – American Cancer Society, Feed the Pack- East Campus (take home meals for students),Princess Theater Troupe (building repairs), Ringgold County Conservation Board (interactive exhibits), Mt Ayr Lions Club (flight squad basketball fundraiser) Adams Community Economic Development Corp. (sewer repair), Carbon Community Center(building remodel), City of Afton(building remodel), Fostering Hope in Southwest Iowa(education training), Mt Ayr Volunteer Fire Department (equipment) Stanton Viking Center (office equipment), Williamson Legion Post 719(Veterans Honors Flight),Corning Fire Department(equipment) City of Corning (building repairs)



Operation Round-UP® funds are generated through a voluntary rounding up of member-owner's electric bill to the next nearest dollar.

Of our 5,928 accounts, we're excited that 3,945 meters are signed up for Operation Round-UP®.

If you're not currently participating in Operation Round-UP® and would like to become a part of this worthwhile program, please call our office at (888)220-4869 for information or fill out the registration form to the left and return to us!

Operation Round-UP® = Small Change That Changes Lives

Name _____

Address _____

Acct # _____ Phone # _____



Pictured second from left is Tim Pfeiffer of Southwest Iowa REC, presenting an Operation Round-Up check for \$1195.99 to the Good Shepherd Preschool for a fence around their playground. Receiving the check for Good Shepherd Preschool (left to right) Eric Kutzli, Janell Frey, Brittany Whigham, and children enjoying the playground.



Pictured is Corning Mayor, Jan Leonard, and Southwest Iowa Rural Electric employee, Suzy Olson. Mayor Leonard, representing the City of Corning, is being presented with an Operation Round Up check for \$4000.00 towards restoration of the Widener Building in downtown Corning.

RECare – Customer Contribution Fund

Southwest Iowa REC's RECare program makes it easy to help Cooperative neighbors in need this winter. With rising heating fuel prices this season, more and more Iowans are seeking assistance with energy, heating and weatherization costs. While some federal and state dollars exist to help those in need, there are still shortfalls.

Consider a monthly contribution to Southwest Iowa REC's RECare program. Your contribution – whether it is \$1 or \$10 a month – when combined with those of other generous members, can go a long way in helping those who can't afford winter's heating bills. To help, fill out the form:

Consumer Authorization Form

Yes, I want to be a part of “members helping members” and contribute to RECare.

____ I will make a 1-time contribution to RECare. My check is enclosed.
 ____ I will contribute \$_____ per month to RECare. I understand that this amount will be automatically added to my monthly electric bill.

Name _____ Account # _____

Address _____

City _____ State _____ ZIP _____

Mail to: **RECare – SW Iowa REC**

1801 Grove Avenue; Box 367; Corning, IA 50841

OR **RECare – SW Iowa REC**

1502 W South Street; Box 391; Mt Ayr IA 50854

OR **RECare – SW Iowa REC**

415 Broad Avenue; Box 460; Stanton, IA 51573

Garlic Apple Pork Roast

- 3-4 pound boneless pork loin roast, thawed
- 6 ounces apple jelly
- ½ cup water
- 2 teaspoons garlic, minced
- 1 tablespoon parsley
- ½ teaspoon salt
- ½ teaspoon pepper



Cut roast in half and place in slow cooker. In a bowl, combine jelly, water and garlic; pour over roast. Sprinkle with parsley, salt and pepper. Cover and cook on low for 8 to 8½ hours. Remove from juice and let stand 5 minutes before slicing. Serve with cooking juices.

This month's recipe was submitted by Sharon Cline, of Kent. It was chosen to be in the October edition of the Living with Energy in Iowa magazine. If you are interested in submitting a recipe, please send to:

Recipes

Living with Energy in Iowa
 8525 Douglas Ave., Suite 48
 Des Moines, IA 50322

If your entry is selected, you will win a \$25 bill credit! Congratulations Sharon!



The RECipe

Enjoy!

Energy Efficiency Tip of the Month



Energy bills can increase during winter for a variety of reasons, like house guests more time spent at home, and shorter days and longer nights. Small actions like turning down your thermostat, replacing old bulbs with LEDs and washing clothes in cold water can help you save.



Like us on Facebook

2020 Energy Efficiency & Beneficial Electrification Program Delivery Costs = \$.0028/kwh



Corning
 1801 Grove Ave., Corning, IA 50841

Mount Ayr
 1502 W. South St., Mount Ayr, IA 50854

Stanton
 415 Broad Ave., Stanton, IA 51573

Phone Number: (888) 220-4869

Board of Directors

Marilyn Werner, President Phil Kinser, CEO
 Mark Herzberg, Vice President
 Ken Peppmeier, Secretary
 Kay Fast, Treasurer
 Fred Hossle Deena Moore
 Dana Morgan Terry Barnes
 Jason Smith Dale Walkup