



Corning | Mount Ayr | Stanton

# Southwest lines

A monthly publication for members of Southwest Iowa Rural Electric Cooperative

May 2020

## 2020 Annual Meeting Plans

Plans are well underway for this year's Annual Meeting. Southwest Iowa Rural Electric Cooperative's Annual Meeting will be held at the Lenox Community Center on Thursday, September 10, 2020. The general business session will be called to order at 6:30 p.m. In addition to reports being presented that cover our 2019 operations, a major item of business will be the election of three directors to serve one three-year term each. Directors whose terms expire at the Annual Meeting in September are:

- Region 1, District #2 – Marilyn Werner
- Region 2, District #6 – Kay Fast
- Region 1, At-Large – Ken Peppmeier

A nominating committee will be named at the May board meeting and given the task of nominating qualified candidates to run for each of these positions. Once the slate of candidates is chosen, members will be given the opportunity to vote by mail or at the Annual Meeting on September 10th. A detailed explanation of the nominating and election process will be provided in the next newsletter. If you are interested in being considered to serve on the nominating committee this year, please contact Phil Kinser at (888) 220-4869.



Our offices will be closed Monday, May 25<sup>th</sup> in observance of Memorial Day.

## Luke Brockshus



Luke Brockshus began as an Apprentice Lineman in the Corning office April 16th. Luke is from Stanton, Iowa and will graduate from Metro Community College Linemen school in May 2020. In 2019, Luke was awarded a Linemen Scholarship from Southwest Iowa REC. He says, "I'm excited to get to work and to continue learning from the linecrew." Welcome Luke!

## Congratulations to Nathan Weeda

Congratulations for 15 years of service!  
(And for practicing safe Covid regulations)

Nathan is a lineman in the Mount Ayr location.



Pictured are Nathan (left) and Duane Schafer, Director of Operations at SWIAREC, presenting him with his 15-year service award.



Sunday, May 10<sup>th</sup>

## CEO's COMMENTS:

# Stay in the Know

At Southwest Iowa REC, we are constantly striving to improve our operational efficiency so we can provide the most reliable electric service possible for our consumer-members (that's you!).

We rely on data for nearly every aspect of our operations, which is why we need your help. By making sure we have your most accurate and complete contact information, we can continue to provide the high level of service that you expect and deserve. Accurate information enables us to improve customer service and enhance communications for reporting and repairing outages. It also allows co-op members to receive information about other important programs, events and activities.

Up-to-date contact information can potentially speed up the power restoration process during an outage. For example, the phone number you provide is linked to your service address in our outage management system. This means

when you call to report an outage, our system recognizes your phone number and matches it with your account location. Accurate information helps our outage management system predict the location and possible cause of an outage, making it easier for our crews to correct the problem.

While we always do our best to maintain service, we occasionally plan outages to update, repair or replace equipment. In these instances, we can provide advance notification to affected members if we have your updated contact information and communication preferences. Keeping the co-op updated with your information also helps us when there's a question about energy use or billing. In addition to phone calls, we are making greater use of emails and text messages to communicate with our members. In addition, discrepancies on your account can be taken care of promptly if Southwest Iowa REC has accurate account information.

Many of you have been members of the co-op for years, and it's likely that your account information hasn't been updated for some time. We recognize that many members now use a cell phone as their primary phone service, and we might not have that number in our system.

I want to emphasize that in providing your contact information to the co-op, we will never share this information with any third parties. It is only used by Southwest Iowa REC to send important information to you. Please take a moment to confirm or update your contact information by calling our office or logging into your account electronically via SmartHub. By doing so, you will be helping us improve service and efficiency so we can better serve you and all members of the co-op.



Phil Kinser

## Reduce Energy Use During Peak Hours

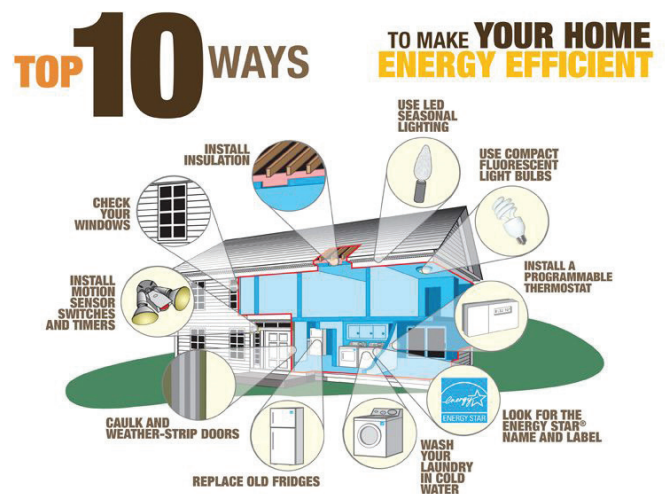
Peak hours are the busiest times for your local electric cooperative, since many people are using electricity at the same time. In addition, it costs your co-op more to generate electricity when demand soars during peak periods – and the cost of your electricity also may rise. Obviously, using less electricity during peak periods can save your co-op – and you – money.

Here's how you can help during peak hours, which generally are on the hottest summer days between 4 p.m. and 9 p.m.:

- Shift household chores and activities away from peak periods. Wait to run your dishwasher until you go to bed, for instance.
- If you have air conditioning, turn the thermostat up when you are gone and

at night. Cool only the rooms that you are using.

- Use the most energy-efficient appliances you have. Your microwave oven, for example, uses considerably less energy than your stove or cooktop.
- If you're buying a new appliance, make sure you get a highly efficient one. Look for ENERGY STAR® labels when you're evaluating different models.
- Be aware of your energy consumption, and try to get in the habit of using energy efficiently year-round.

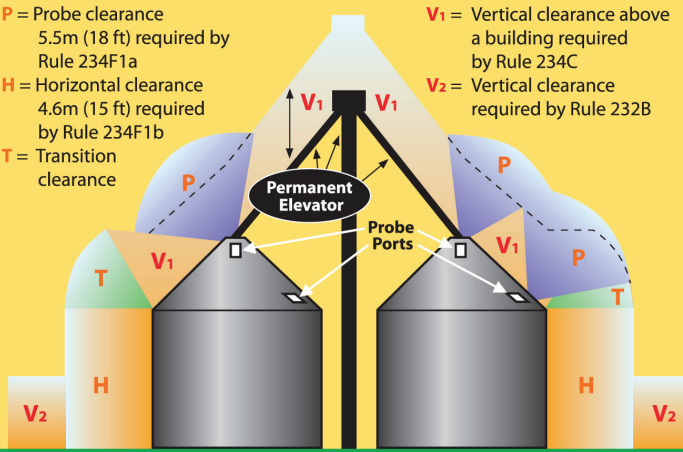


Use the energy you need, but use it wisely! You'll help your co-op avoid building expensive new power plants – and that, in turn, will help keep your electric rates stable.

## Clearance envelope for grain bins filled by permanently installed augers, conveyors or elevators

- P** = Probe clearance  
5.5m (18 ft) required by Rule 234F1a
- H** = Horizontal clearance  
4.6m (15 ft) required by Rule 234F1b
- T** = Transition clearance

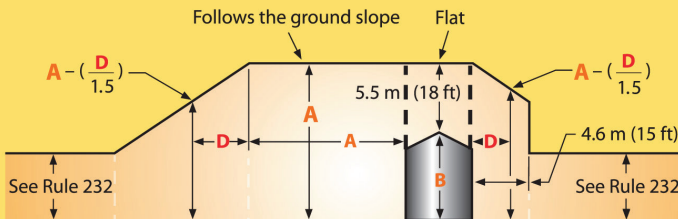
- V<sub>1</sub>** = Vertical clearance above a building required by Rule 234C
- V<sub>2</sub>** = Vertical clearance required by Rule 232B



From IEEE Std. C2-2017, "National Electrical Safety Code." © Copyright 2016 by IEEE. All rights reserved.

## Clearance envelope for grain bins filled by portable augers, conveyors or elevators

### ELEVATION



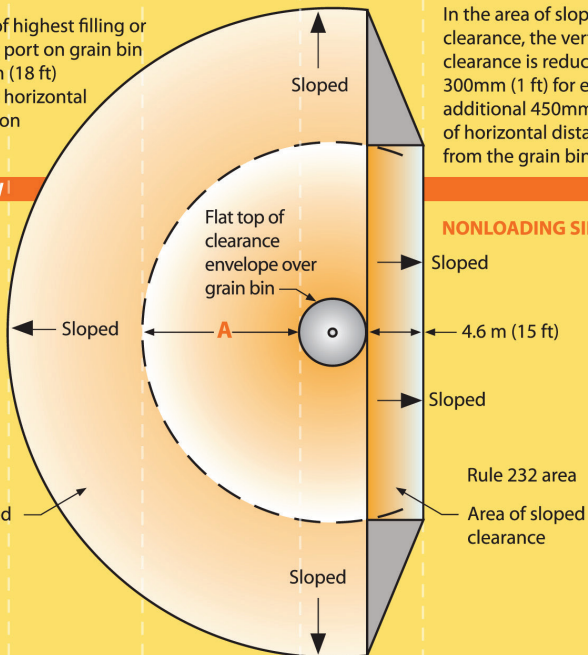
- B** = Height of highest filling or probing port on grain bin
- A** = B + 5.5m (18 ft)
- D** = Variable horizontal dimension

In the area of sloped clearance, the vertical clearance is reduced by 300mm (1 ft) for each additional 450mm (1.5 ft) of horizontal distance from the grain bin.

### PLAN VIEW

#### LOADING SIDE

See Rule 232  
Area of sloped clearance



#### NONLOADING SIDE

Sloped  
4.6 m (15 ft)  
Sloped  
Rule 232 area  
Area of sloped clearance  
Sloped

*Disclaimer: These drawings are provided as part of Iowa electric cooperatives' annual public information campaign and are based on the 2017 Edition of the National Electrical Safety Code. To view the actual drawings, refer to that publication. Every care has been taken for the correctness of the contents for these drawings. However, the Iowa Association of Electric Cooperatives and its member cooperatives accept no liability whatsoever for omissions or errors, technical inaccuracies, typographical mistakes or damages of any kind arising from the use of the contents of these drawings, whether textual or graphical.*

## Maintain proper clearance around grain bins

**W**hen you start to plan for a new grain bin, please contact Southwest Iowa REC.

Southwest Iowa REC will provide assistance in planning for a safe environment for everyone working and living around grain bins. The State of Iowa requires specific clearances for electric lines around grain bins, with different standards for those filled by portable and permanent augers, conveyors and elevators.

The drawings on this page show the specific clearances required for both scenarios. If you have any questions concerning the drawings, please contact Southwest Iowa REC.

According to the Iowa Electric Safety Code found in Iowa Administrative Code Chapter 199 -- 25.2(3) b. An electric utility may refuse to provide electric service to any grain bin built near an existing electric line which does not provide the clearances required by the American National Standards Institute (ANSI) C2-2012 "National Electrical Safety Code," Rule 234F. This paragraph "b" shall apply only to grain bins loaded by portable augers, conveyors or elevators and built after September 9, 1992, or to grain bins loaded by permanently installed augers, conveyors, or elevator systems installed after December 24, 1997. (As adopted by the Iowa Utilities Board)

Southwest Iowa REC is required by the Iowa Utilities Board to provide this annual notice to farmers, farm lenders, grain bin merchants, and city and county zoning officials. If you have any questions concerning clearance regulations, please call Southwest Iowa REC.



	<p><b>DANGER</b></p> <p><b>LOOK UP &amp; LIVE</b></p> <p>KEEP CLEAR OF ALL OVERHEAD ELECTRICAL HAZARDS</p>	
--	--	--

## Board Approves Patronage Allocation

In March, the Board of Directors allocated margins for 2019. Margins are the “bottom line” on our financial operating statement when all the expenses of providing electric services to our member-owners are deducted from the revenues taken in. After the annual independent audit of the books, these margins are allocated to the various reserve accounts and also as patronage capital to the member-owners who received service from the Cooperative during the year the margin was created.

For 2019, margins of \$621,844.74 will be allocated to the member-owners based upon the amount each paid for electricity in proportion to what the other member-owners paid. The payment of patronage capital is deferred until a future point in time when the financials of the Cooperative allow a refund. Member-owners who purchased electricity from us in 2019 should have received a patronage allocation notice in the mail in late April or early May.

## Chicken Waldorf Salad

- 2 cups roasted Chicken
- 5 Celery, cut up
- 2 Granny Smith apples, diced
- 2 cups red grapes, sliced
- ½ cup fresh lemon juice
- 1 tbsp fresh mint
- 1 tbsp Dijon mustard
- ½ cup mayonnaise
- 1 cup Walnuts (optional)
- Salt & Pepper to taste



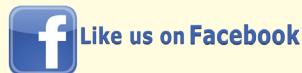
1. Mix all ingredients together. Enjoy!



## Covid-19 Update

We are continuing to follow guidance and take all necessary precautions to assure the safety of our members, employees and communities during the Coronavirus (COVID-19) outbreak. Our offices have been closed to the public since March 17th, but staff is working and we will continue to serve your needs and process payments. We realize that many of our members have been and will be affected by this pandemic emergency so we encourage you to contact us to discuss your situation and make payment arrangements. For current updates, notifications, and resources available to assist you, please visit our Facebook page, website ([www.swiarec.coop](http://www.swiarec.coop)) or call our offices (888-220-4869).

*We are here for you and we are all in this together!*



**2020 Energy Efficiency & Beneficial Electrification Program Delivery Costs = \$.0028/kwh**

## Energy Efficiency Tip of the Month



When the weather is nice, put your grill to use! During summer months, cooking outdoors is a great way to save energy and eliminate unwanted heat from cooking indoors.



**Corning**  
1801 Grove Ave., Corning, IA 50841

**Mount Ayr**  
1502 W. South St., Mount Ayr, IA 50854

**Stanton**  
415 Broad Ave., Stanton, IA 51573

**Phone Number: (888) 220-4869**

**Board of Directors**

Marilyn Werner, President	Phil Kinser, CEO
Mark Herzberg, Vice President	
Ken Peppmeier, Secretary	
Kay Fast, Treasurer	
Fred Hossle	Deena Moore
Dana Morgan	Terry Barnes
Jason Smith	Dale Walkup