



Corning | Mount Ayr | Stanton

Southwest lines

A monthly publication for members of Southwest Iowa Rural Electric Cooperative

January 2021

2021 Vegetation Management Plans

The majority of our vegetation management program is completed during the months of January – March. In 2021 the following areas are scheduled for vegetation management (ground cut, trim and chemical treatment):

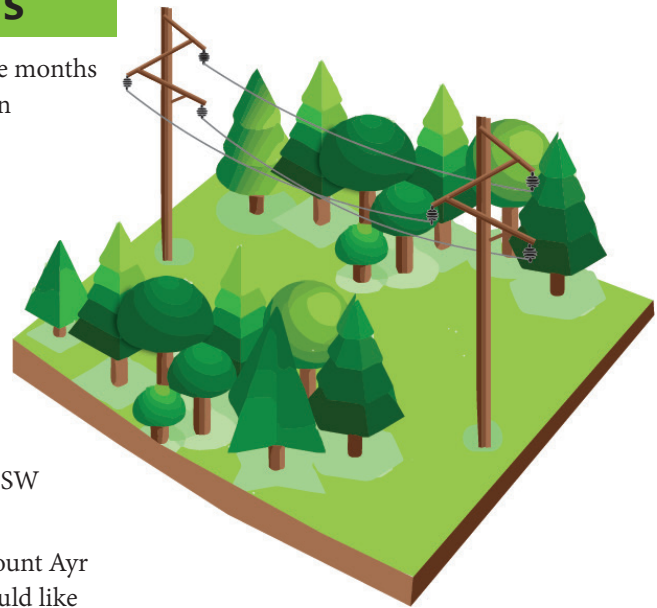
Midwest Spray Teams (contractor)

Montgomery County – All townships
Ringgold County – Riley and Athens townships

REC Crews

Page County – Nebraska and Nodaway West townships
Adams County – Union, Prescott and east half of Washington townships
Union County – Douglas township
Taylor County – Holt, Washington, and Nodaway townships
Ringgold County- Monroe, Athens (NW corner), east half of Poe, Union (SW corner), Liberty, and Tingley (south half) townships

You can always feel free to contact us at any of our service locations in Corning, Mount Ayr or Stanton with any questions you might have on this process. Or perhaps, you would like to let us know about a tree or other vegetation that you think could be too close to power lines or important electrical equipment. You'll also find helpful information on our website at www.swiarec.coop.



Like us on Facebook

Cooperative Leaders Meet With Legislators

Representatives from Southwest Iowa REC (Corning/Mt Ayr/Stanton), Clarke Electric (Osceola), Farmers Electric (Greenfield) and Guthrie County REC (Guthrie Center) hosted a Legislative Meeting via Zoom on December 10, 2020. Representatives Ray (Bubba) Sorensen and David Sieck along with Senators Tom Shipley and Mark Costello met with about 25 attendees from these area Cooperatives.

The Legislative Meeting gives cooperative leaders a chance to discuss key issues in detail with their area representatives and for the legislators to discuss what they expect to work on in the next legislative session. The biggest influence on lawmakers is their own voters and their expressed concerns. Whether you are a co-op member, director, manager or employee, you can play an important role in this process. If we don't tell them about our issues and concerns, they won't know we care.

Your Cooperative's future can be directly related to your active participation in the political process. There is a great deal of power behind grassroots activities and how they can effectively influence the outcome of legislative, political and community decisions. We are there to get the best deal for Iowa's RECs and YOU, our members. You can help in this effort. We encourage all of you to participate in Iowa's politics.

CEO's COMMENTS:

Proactively Providing Safe and Reliable Service

When electric cooperative member-owners are asked what they value most about their electric service, two things consistently rank near the top – reliability and affordability. With a 5-year annual average reliability rate of 99.98%, we know reliability doesn't happen by chance. It takes constant effort to maintain systems, improve where necessary, and anticipate our member-owners' increasing needs for electric service.

During the winter months, reliability is under greater scrutiny from our member-owners. Old Man Winter's fury of snow and ice storms, combined with strong winds, can put our systems to the test in a significant way. When outages occur, the most frequent cause is trees or other vegetation coming into contact with power lines. These types of outages are not only inconvenient for our member-owners but also costly to your cooperative's bottom line, which impacts affordability over the long-term.

We know that vegetation – especially trees – are valued parts of our landscape. Beyond enhancing the beauty of an area, they provide important functions like cool shade, noise barriers, supplying vital oxygen to the atmosphere, and providing a habitat for many animals. But trees also grow, which

can cause problems with power lines if they are not properly planted or if volunteer trees rise in unintended areas.

When branches and limbs break off, they often land in roadways or bring the power lines down with them – posing a safety risk to cooperative employees and the public. Because our distribution system connects thousands of people across our service territory, one tree coming in contact with a power line may impact your neighbors near and far. The Iowa Electrical Safety Code requires electric utilities, including cooperatives, to have a schedule and procedures for regular tree trimming and vegetation management, which is critical in minimizing these instances.

Both federal and state policies require that vegetation must be cleared from power lines as a safety measure for member-owners and our employees. These groups also have strict guidelines, including prohibiting trees from being planted certain distances away from power lines.

Under our vegetation management program – which means that trees and other vegetation are inspected and trimmed on a 5-year cycle – maintaining line clearance is our primary objective. We do this while ensuring we trim vegetation in an environmentally

responsible manner. The tree trimming process has two purposes – to remove elements that may already be coming into contact with utility equipment, such as wires and conductors and to create a clearance that will provide hazard-free operation of electric service.

Using the established standards as the guide, we also know that a methodical, proactive approach is important to ensure the safe, reliable, affordable and environmentally responsible delivery of service. Like many things in life, preventative maintenance is a key to health – oil changes are vital to the longevity of a vehicle, regular dental visits are important in cavity prevention, and annual inspections and maintenance will likely extend the life of your furnace. Left to chance – rather than being proactive – your vehicle, teeth or furnace would likely suffer. The same is true with your cooperative's electric system. By proactively clearing vegetation before it reaches power lines, Southwest Iowa REC will be less impacted during severe weather and we'll avoid longer, more costly outages.



Phil Kinser

For Sale by Sealed Bid



2006 Ford F350 XL Super Duty (chassis only)
92,470 miles
5.4L engine (locked up)
4x4 dually
Automatic transmission (weak)
Body and glass are good
Tires are 50%
Sold as-is, where is, with no warranty
Minimum bid requirement is \$999.00

Truck may be seen at our Corning office located at 1801 Grove Avenue, Monday – Friday, 7:30 a.m. to 4:00 p.m. by appointment.

Sealed bids are due by 4:00 p.m. on January 28, 2021. Please mark your envelope “F350 Bid” and mail it to the following address:

Southwest Iowa REC
1801 Grove Avenue
Box 367
Corning, Iowa 50841
Attn: Phil Kinser

Southwest Iowa REC reserves the right to refuse any and all bids.

Scholarships Reminder

Southwest Iowa REC will once again be offering scholarships for the 2020-2021 school year to graduating high school seniors.

We will be awarding fourteen (14) \$500 scholarships. In addition, three (3) \$1,000 scholarships will be available for students planning to attend an Accredited Lineman School or electrical trade program.

Completed applications and a photo must be received at the REC Office by March 2, 2021 to be eligible.

2021 Residential Energy Efficiency Incentives – Effective 1/1/2021

Southwest Iowa Rural Electric Cooperative provides our members with ways to save on your energy budget. We offer rebates on the following products that will offer substantial savings for your home.

Appliances: When replacing appliances, always look for **Energy Star** qualified appliances. Appliances can account for 13% of your energy bill. **Energy Star** qualified appliances incorporate advanced technologies that use 10-50% less energy and water than standard models.

Energy Star Clothes Washer/Dryer	
With electric Water Heater	\$40/unit
Energy Star Clothes Dryer	\$20/unit

Pull the Plug Appliance Recycling:

Call 855-838-7817 to request collection and recycling of your old, working refrigerator, freezer or window air conditioner and receive an incentive for up to three operable units per address. Curbside pick up and recycling is done by the cooperative's contractor. For refrigerators and freezers: appliance size requirements apply (10 cubic feet or larger, no commercial sizes).

Refrigerator	\$35/unit
Freezer	\$25/unit
Window Air Conditioner	\$25/unit

Indoor Air Quality: Equipment must serve the entire conditioned space of the home. Limit of two air quality system per home.

Heat Recovery Ventilator (HRV)	\$250/unit
--------------------------------	------------

Heating and Cooling: As much as half of the energy used in your home goes to heating and cooling. So, making smart decisions about your home's heating, ventilating, and air conditioning (HVAC) system can have a big effect on your utility bills - and your comfort.

Geothermal Heat Pump (closed loop system) listing)	\$400/ton (AHRI listing)
(open loop system)	\$300/ton (AHRI listing-- no "pump & dump systems)
G.S.H.P. Replacement	\$150/ton

Cold Climate Air Source Heat Pump \$400 /ton

ASHP units over 1/2 ton that meet current federal standard efficiencies. Eligible products listed here: <https://ashp.neep.org/>

Air Source Heat Pump	\$200/ton (ASHP units over ¼ ton; including mini-split systems)
(Hybrid system)	\$300/ton

Energy Star Bonus \$250/unit (Min. SEER 15.0, EER 12.5, HSPF 8.5)

Energy Star Central AC \$100/unit (Min. SEER 15.0 & EER12.5)

Outdoor Security Lighting

Energy Star LED or DLC Qualified Fixtures	\$10/fixture (20-34 watt)
	\$20/fixture (35-49 watt)
	\$40/fixture (50-74 watt)
	\$50/fixture (75-124 watt)
	\$60/fixture (125 watts or more)

**New lighting fixtures must be more energy efficient (lower wattage) than original installed fixtures.*

Water Heaters: From warm showers to clean dishes, we count on hot water. In fact, the average household spends \$400-\$600 per year on **water heating - making it the second largest energy expenditure** behind heating and cooling. Depending on the technology you choose, you can cut your water heating costs in half!

Energy Star Heat Pump Water Heater	\$650/unit
Geothermal Assisted Unit (DSWH)	\$150 (40 gal. or larger tank w/ desuperheater)
Electric Resistance Storage Tank Water Heater	\$75/unit (40 gal. or larger. tank-min. EF 0.90)
Electric Resistance Unit / First Time Heat Plus	\$125/unit (40 gal. larger tank-min. EF 0.90)

Go Electric Bonus for New Accounts or Conversions \$100

*Inquire for prices on water heaters purchased from SWIAREC



Weatherization: Weatherizing your home will put money back in your pocket every month. It's that simple. On average, weatherization helps homeowners reduce their energy consumption by 25% to 30% - a savings of \$600 per year, every year. Older homes save even more – around 35% or more!

Requirements are you must have electric heat and/or central air conditioning (homes with natural gas heat do not qualify).

Home must be built prior to 2000.

Must be upgrade to existing home (new additions do not qualify)

Project cost must be \$150 or more (labor costs for self-installed projects cannot be included).

Maximum incentive per home
 \$2,200 (with electric heat with or without air conditioning)
 \$300 (with central AC only and non-electric heating)

*Inquire with the Cooperative for details

New Home Construction: Building an All-Star home is the maximum goal you can obtain toward energy efficiency and will result in putting the most money back in your pocket.

All-Star Home \$500/home

Premier Electric Home \$200/home
(new construction, heat pump, electric water heating and appliances)

*Please ask about the Building Checklist

Other Programs:

Electric Vehicle Level 2 Charger \$500
(Must be installed at a residence served by Southwest Iowa REC)

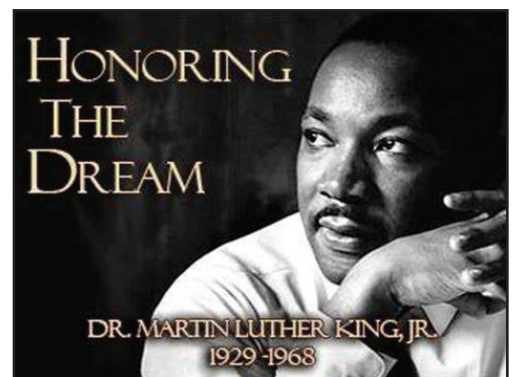
EV Ready \$100

• 240/208 Volt wiring with 50-amp breaker (to support 40-amp charging) box on back or side wall of garage with NEMA 6-50 or 14-50 outlet.



Online
 Rebate Forms

We also offer easy online rebate submission. Please visit swiarec.coop/content/rebates to find the forms.



Martin Luther King, Jr. Day
 January 18, 2021

Why do Co-Ops Advertise?

Proactive communication is essential in any industry or business, and it's especially important for Southwest Iowa REC to communicate often with our members who own the co-op. In fact, the core principles of our cooperative business model include concern for community and keeping our members informed and educated. We use a variety of communication methods such as our monthly newsletter, radio announcements, social media posts, and our website. All serve as effective ways for us to quickly communicate important information with you regarding safety, energy efficiency, cooperative business and regulatory notices. Here are a few other reasons we advertise:

1. Safety Awareness

As your electric cooperative, we have a duty to keep you safe from the dangers of electricity. Preventative safety messages are a top priority in our public communications efforts. For example, we remind farmers to watch out for electric lines and poles during planting and harvest seasons.

We encourage members to call 8-1-1 before digging so underground utilities can be properly located. Throughout the year, we tell members to "look up and live" as they use ladders and tall equipment around the house, garage or farm.

2. Energy Efficiency

At Southwest Iowa REC, we're committed to helping our members use energy wisely. We provide multiple resources to help you find ways to reduce that electricity bill and become more energy efficient, but we need to promote those resources so you know about them. We communicate through various methods to let you know about rebates and incentives for energy efficient products.

3. Cooperative Business

As an owner of the electric cooperative, you need to know important information about the financial condition of the business and when to elect directors of the board. We publish an annual report which includes important information about the cooperative.

4. Regulatory Notices

We are required to communicate with our cooperative members regarding specific state and federal regulations. Communicating frequently with our members is an important business function that helps Southwest Iowa REC achieve our mission of powering lives and empowering communities.

Tuscan White Bean Soup

This Creamy Tuscan White Bean Soup with Sausage comes together in 30 minutes. It's the perfect quick and easy dinner when you're looking for something hearty and healthy – filled with spinach, carrots, white beans and sausage for one comforting bite!

- 1 lb Italian sausage, ground
- 1 tsp Basil
- 2 cup Carrots
- 1 cup Celery
- 2 Garlic cloves
- 2 cans Kidney beans, white
- 1 tsp Oregano
- 6 oz Spinach, fresh
- 1/2 tsp Thyme
- 1 Yellow onion, large
- 1 14 oz. can Coconut milk, full fat
- 5 cups Vegetable broth
- 1 Red pepper
- 1/4 tsp Red pepper flakes
- 1 Salt and pepper

1. Heat a large saucepan over medium high heat.
2. Add Italian sausage to the pan and cook until browned. Using a wooden spoon chop up sausage into smaller pieces during the cooking process.
3. Next add in onion, celery, carrots, red pepper and garlic. Saute for 5 minutes or until vegetables are tender and onions are translucent. Then add in thyme, basil, oregano and red pepper flakes. Stir to combine.
4. Next, add in white kidney beans and vegetable broth. Cover. Bring to a boil, reduce heat and simmer for 10 minutes.
5. Lastly, add coconut milk and spinach to the pot. Stir until coconut milk is mixed in completely. Cook until spinach is wilted.
6. Serve



The  RECipe



Enjoy!

Energy Efficiency Tip of the Month

Replace standard power strips with advanced power strips to save energy. Advanced power strips look like ordinary power strips, but they have built-in features that are designed to reduce the amount of energy used by standby electronics that consume energy even when they're not in use (also known as phantom load).

The National Renewable Energy Laboratory (NREL) estimates that the average home loses \$200 annually to energy wasted by phantom load.

Source: www.nrel.gov



2020 Energy Efficiency & Beneficial Electrification Program Delivery Costs = \$.0029/kwh



Find us on
Facebook

Corning
1801 Grove Ave., Corning, IA 50841

Mount Ayr
1502 W. South St., Mount Ayr, IA 50854

Stanton
415 Broad Ave., Stanton, IA 51573

Phone Number: (888) 220-4869

Board of Directors

Marilyn Werner, President

Mark Herzberg, Vice President

Ken Peppmeier, Secretary

Kay Fast, Treasurer

Fred Hossle

Dana Morgan

Jason Smith

Deena Moore

Terry Barnes

Dale Walkup

Phil Kinser, CEO