



Corning | Mount Ayr | Stanton

Southwest lines

A monthly publication for members of Southwest Iowa Rural Electric Cooperative

July 2022

2022 Nominating Committee Meets



*Pictured left to right:
Eric Marsh, John A. Overholtzer,
Bob Allen, and Michele Beck on the laptop.*

The Board appointed Nominating Committee of John A. Overholtzer, Eric Marsh, Bob Allen, and Michelle Beck met on Tuesday, June 13th and nominated the following members of the Cooperative for the office of Director for the ensuing term of three (3) years each, all to be elected at the Annual Meeting to be held September 8, 2022:

- Region 1 - District No. 4: Janet Gray; Terry Barnes (i)
 - Region 2 – District No. 8: Alan Spencer; Aaron Williams
 - Region 2 – At Large: Mark Herzberg (i); Nicholas Gray
- (i)incumbent director

John A. Overholtzer
Chairman – Nominating Committee

AVOID UTILITY SCAMS

Scammers will threaten you with everything from shutting off power to your home to legal action. Don't fall victim to these types of scams.

- Our employees will never show up at your door to demand payment.
- Never give personal information to an unknown caller or visitor. Our representatives have access to the details they need to service your account.
- Demands for immediate payment by wire transfer, cryptocurrency, gift cards or cash reload cards should immediately raise red flags.
- If you think you've been contacted by a scammer falsely representing the co-op, please let us know as soon as possible.

Congratulations Justin!



Congratulations to Justin Murphy for accepting the position of Director of Operations.

Southwest Iowa hopes everyone had a Safe and Happy July 4th Holiday!

CEO's COMMENTS:



A Summer of Extremes Could Impact Southwest Iowa REC Member-Consumers

“All of West and much of Midwest at risk of summer blackouts, regulator warns”
“Power sector warns of blackouts as demand clashes with traditional plant retirements”

“Natural gas surges above \$9, hits the highest since 2008 as inventories stay low”
You’ve probably seen headlines like these recently and have wondered how it might impact Southwest Iowa REC and its member-consumers. While no one should panic, there is reason for concern and to be prepared for any eventuality. A summer season of potential above-average temperatures and extreme weather events, combined with increased demand for electricity and a potential reduction in electric generation resources may intermittently affect Southwest Iowa REC member-consumers.

Under normal summer conditions, member-consumers can anticipate the strong reliability they have come to expect from Southwest Iowa REC. However, in certain extreme conditions, the Midcontinent Independent System Operator (MISO), may be forced to initiate temporary controlled load curtailments. MISO faces a potential generation shortfall this summer, resulting in a higher risk of energy emergencies during peak summer conditions. This shortfall is due to several factors including a significant increase in electric usage and power plants that are closing faster than new, dispatchable sources of generation can replace them. The growing number of wind and solar resources in Iowa greatly assist in overall energy production, but they only provide intermittent power. MISO acts like an air traffic controller of the electric grid to manage real-time generation within its footprint across the middle U.S. and parts of Canada,

including about 90% of Iowa, and ensure electric supply and demand are balanced. Southwest Iowa REC’s power supplier, Central Iowa Power Cooperative (CIPCO), participates in MISO to buy and sell generation as needed.

“CIPCO maintains a diverse 24/7 generation portfolio and has met all capacity requirements for member-owners like Southwest Iowa REC,” said CIPCO CEO Bill Cherrier. “While CIPCO has done its part, we are part of a larger regional grid that could be impacted by activities outside of Iowa. We are prepared to implement energy conservation methods and follow a series of steps that align with MISO criteria to strategically, temporarily reduce load, and follow all protocols to ensure the grid stays balanced and stable through the summer months.”

As a member-consumer of Southwest Iowa REC, you can help conserve energy and reduce the potential for controlled temporary outages or interruptions in power. Some helpful ways to beat the peak are:

- Run your electric washer/dryer during off-peak times such as before 4 p.m. or after 9 p.m.,
- Raise your air conditioner’s thermostat a few degrees,
- Turn off all lights during the day or in empty rooms,
- Substitute air conditioner use with ceiling fans to keep cool; and
- Unplug appliances and other electrical equipment that aren’t essential to your family’s health and safety.

“The more member-consumers we have conserving energy, the better for our cooperative,” said Southwest Iowa REC CEO/General Manager Phil Kinser. “Energy prices are very high during peak

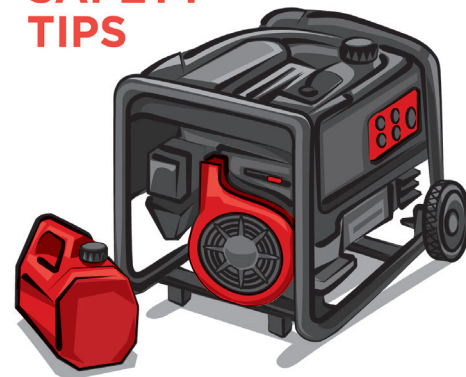
periods and that impacts the power supply cost to everyone. If we all become more energy aware and make a few modifications in when we use energy, we can make a difference together.”

Southwest Iowa REC member-consumers will be notified of peak alerts through various communication methods such as Facebook, website, radio and phone calls. To learn more about how you can help beat the peak this summer, visit www.swiarec.coop or call 888-220-4869.



Phil Kinser

GENERATOR SAFETY TIPS



Never connect a standby generator into your home’s electrical system. There are only two safe ways to connect a standby generator to your equipment.

Stationary Generator:

An approved generator transfer switch, which keeps your house circuits separate from the electric co-op, should be installed by a professional.

Portable Generator:

Plug appliances directly into the outlet provided on the generator.

Set up and run your generator in a well-ventilated area outside the home. Make sure it’s out and away from your garage, doors, windows and vents. The carbon monoxide generated is **deadly**.

Use a heavy-duty extension cord to connect electric appliances to the outlet on the generator.

Start the generator first **before** connecting appliances.

Source: SafeElectricity.org

ECONOMIC DEVELOPMENT LOANS AVAILABLE



Southwest Iowa REC has a Revolving Loan Fund (RLF) available and we are accepting applications. We will accept and consider applications for loans from the RLF for projects that will significantly benefit rural areas. The RLF is not intended to compete with other public and private lenders but to collaborate with them to provide the financial package necessary to make the project happen. The RLF seeks to improve the quality of life in rural areas by contributing to the long-term improvement in the economy, including job creation and retention, diversification, improving skills of the rural workforce, and upgrading the public infrastructure to improve the health, safety, and/or medical care of rural residents.

A Loan Review Committee (LRC) appointed by the REC Board of Directors and consisting of both Cooperative and community leaders reviews all RLF loan applications. The LRC performs necessary credit analysis and due diligence in order to make a written recommendation to the REC Board of Directors which has final authority regarding all actions of the RLF. The LRC will make a recommendation concerning the term of the loan depending upon project need, the expected life of the security, and the applicant's ability to pay. RLF loans will be collateralized as determined necessary by the REC Board of Directors to secure its participation in the project, and can include, but, is not limited to mortgages, liens, letters of credit, and/or personal guarantees.

Uses of RLF loan proceeds may be for buildings, real estate, equipment or computer needs. Ineligible uses of RLF funds include pre-development costs, refinancing of existing debts, illegal activities, general improvement loans related to normal replacement needs of a business and unrelated to business expansion/job creation, and loans to projects which have alternative sources of financing at reasonable interest rates.

The minimum RLF loan will be \$25,000 and the maximum will be the amount of funds available and must include a minimum of 20% funding from other sources. If you believe you have a project that qualifies for the RLF, contact one of our offices for an application or download one from our website at <http://www.swiarec.coop/content/loans>.

Southwest Iowa Rural Electric Cooperative is an equal opportunity provider and employer.

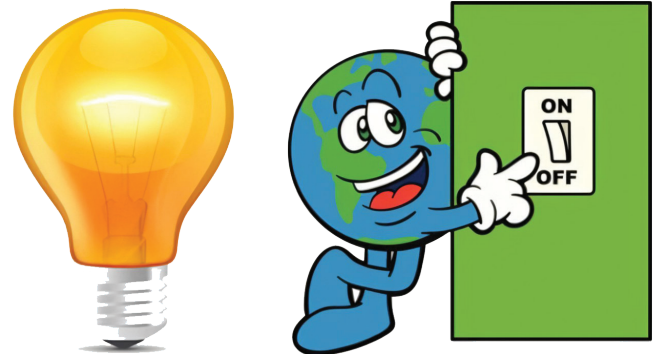
Reduce Energy Use During Peak Hours

Peak hours are the busiest times for your local electric cooperative, since many people are using electricity at the same time. In addition, it costs your co-op more to generate electricity when demand soars during peak periods – and the cost of your electricity also may rise. Obviously, using less electricity during peak periods can save your co-op – and you – money.

Here's how you can help during peak hours, which generally are on the hottest summer days between 4 p.m. and 9 p.m.:

- Shift household chores and activities away from peak periods. Wait to run your dishwasher until you go to bed, for instance.
- If you have air conditioning, turn the thermostat up when you are gone and at night. Cool only the rooms that you are using.
- Use the most energy-efficient appliances you have. Your microwave oven, for example, uses considerably less energy than your stove or cooktop.
- If you're buying a new appliance, make sure you get a highly efficient one. Look for ENERGY STAR® labels when you're evaluating different models.
- Be aware of your energy consumption, and try to get in the habit of using energy efficiently year-round.

Use the energy you need, but use it wisely! You'll help your co-op avoid building expensive new power plants – and that, in turn, will help keep your electric rates stable.



Bravo!

Dear Southwest Iowa REC,
It was a great honor to be a recipient of your scholarship this year. Thank you for lightening the stress of finances for my college education.

Sincerely,
Abigail Petersen
SWIAREC,

Thank you for your support of SWV!
Best,
Mindy Docker

Dear REC,
Thank you for the scholarship. It will be used for college expenses. My goal is to become a High School History Teacher.

Thanks again,
Henry Bevington

Dear Corning REC,
I am very honored to be a recipient of the Corning REC Scholarship. Thank you for your generosity.

Thank you,
Rebecca Inman

Wanted to say thank you to the crew for putting up the new yard light. It certainly makes the yard so much brighter!

Thanks again,
Edwin Ramsey & Florence and Les Jackson

Dear SWIAREC,
Thank you for awarding me the 2022 Southwest Iowa REC Scholarship. I will attend Iowa State University this fall and the money will be used for those expenses.

Sincerely,
Raines Sackett

Dear SWIAREC Operation Roundup Committee,
On behalf of the Stanton Viking Center, we would like to thank you for your generous contribution towards the Viking Center Sound System Project. Great things are happening in Stanton, stay tuned for more updates & improvements!

Sincerely,
Justin Miller, Director- Stanton Viking Center

Dear Southwest Iowa REC,
I would like to thank you for selecting me as a recipient for your scholarship. I really appreciate it. Thank you for supporting my goal of furthering my education.

Sincerely,
Colby Carlson



The RECipe

Red, White & Blue Cheesecake Salad

- 1 box (3.4 oz. cheesecake pudding mix)
- 12 oz whipped topping
- 18 oz strawberry yogurt
- 1 teaspoon vanilla extract
- 1 lb strawberries (sliced)
- 2 cups blueberries
- 2 cups miniature marshmallows



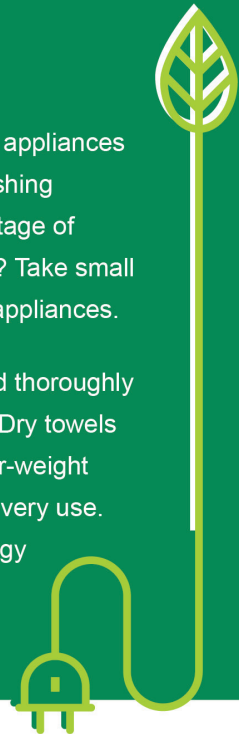
- Place the whipped topping, pudding mix, vanilla extract, and yogurt into a large bowl. Whisk together until fully combined and smooth. Cover the mixture and refrigerate for about one hour or until ready to serve.
- Wash and drain the blueberries. Wash, pat dry and slice the strawberries.
- Remove cream mixture from the refrigerator and gently fold in strawberries, blueberries, and mini marshmallows, stir gently to combine.
- Serve immediately.

Energy Efficiency Tip of the Month

Did you know the combined use of large appliances like dishwashers, clothes dryers and washing machines account for the largest percentage of electricity use in the average U.S. home? Take small steps to save energy when using these appliances.

Only run full loads in the dishwasher, and thoroughly scrape food from dishes before loading. Dry towels and heavier cottons separate from lighter-weight clothing, and clean the lint screen after every use. Wash clothing in cold water to save energy used to heat water.

Source: EIA and DOE



2022 Energy Efficiency & Beneficial Electrification Program Delivery Costs = \$.0028/kwh

Corning
1801 Grove Ave., Corning, IA 50841
Mount Ayr
1502 W. South St., Mount Ayr, IA 50854
Stanton
415 Broad Ave., Stanton, IA 51573
Phone Number: (888) 220-4869

Board of Directors
Marilyn Werner, President Phil Kinser, CEO
Mark Herzberg, Vice President
Ken Peppmeier, Secretary
Kay Fast, Treasurer
Deena Moore Terry Barnes
Dana Morgan Dale Walkup
Jason Smith

Southwest Iowa REC is an equal opportunity provider and employer.