

A full-page background image featuring a worker in the foreground on the left. The worker is wearing a grey hard hat with the 'CIPCO' logo, safety goggles, a black and red plaid jacket, and work gloves. They are holding a thick, multi-strand cable. The background is a faded, light grey image of industrial structures, possibly a power plant or refinery, with tall towers and piping.

2025 LEGISLATIVE GUIDE

MEMBER
DRIVEN.
RELIABILITY
FOCUSED.

An aerial photograph showing a power line restoration project in a rural area. A dirt road runs vertically through the center of the image, flanked by large, dark, tilled agricultural fields. Several white utility vehicles with long articulated booms are positioned along the road, working on the power lines. A few cars are parked on the road. The overall scene depicts a large-scale infrastructure repair project in a rural setting.

OUR MISSION

MUNICIPALITY

Provide Member-owners
with wholesale power and
services in a safe, reliable
and cost-effective manner.

Storm restoration, May

WELCOME

Central Iowa Power Cooperative (CIPCO) is a generation and transmission cooperative owned by 13 member cooperatives and associations, together with the member-consumers they serve in 58 counties across Iowa. Our mission is to provide Member-owners with wholesale power and services in a safe, reliable, and cost-effective manner. Through our balanced, 24/7 energy portfolio, we provide energy to help power our rural and urban communities, our state, and our economy.

Andrew St. John
Executive Vice President & CEO



DRIVEN BY THE NUMBERS

CIPCO and its Member-owners serve approximately 53% of the rural electric cooperative meters in Iowa.

Operating revenue \$214,285,785*

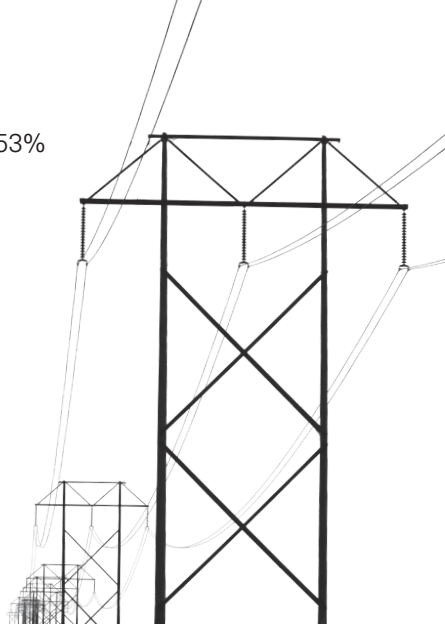
Net margin \$26,929,352*

Total assets \$909,309,520*

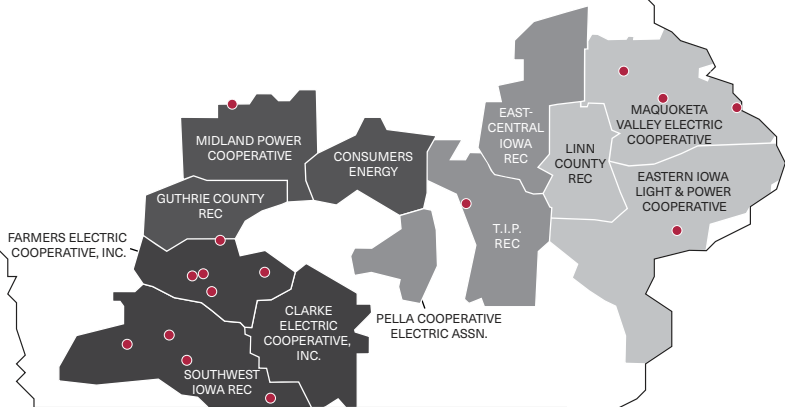
Energy sales 3.01 million MWh*

Miles of transmission lines 1,997*

**Data from 2023 CIPCO annual report*



CIPCO SERVICE AREA



● SIMECA Member

OUR MEMBER-OWNERS

CLARKE ELECTRIC COOPERATIVE

Osceola

David Opie, (800) 362-2154

www.cecnet.net

CONSUMERS ENERGY

Marshalltown

Bridget Itzen, (800) 696-6552

www.consumersenergy.coop

EAST-CENTRAL IOWA REC

Urbana

Teresa Floyd, (877) 850-4343

www.ecirec.coop

EASTERN IOWA LIGHT & POWER COOPERATIVE

Wilton

Kirk Trede, (855) 938-3616

www.easterniowa.com

FARMERS ELECTRIC COOPERATIVE, INC.

Greenfield

Holi Weston, (800) 397-4821

www.farmersrec.com

GUTHRIE COUNTY REC

Guthrie Center

Cozy Nelsen, (888) 747-2206

www.guthrie-rec.coop

LINN COUNTY REC

Marion

Terry Sullivan, (319) 377-1587

www.linncountyrec.com

MAQUOKETA VALLEY ELECTRIC COOPERATIVE

Anamosa

Jeremy Richert, (800) 927-6068

www.mvec.coop

MIDLAND POWER COOPERATIVE

Boone

Bill McKim, (800) 833-8876

www.midlandpower.coop

PELLA COOPERATIVE ELECTRIC ASSN.

Pella

Doug Stewart, (800) 619-1040

www.pella-cea.org

SOUTHWEST IOWA REC

Corning

Phil Kinser, (888) 220-4869

www.swiarec.coop

T.I.P. REC

Brooklyn

Scott Long, (800) 934-7976

www.tiprec.com

SOUTH IOWA MUNICIPAL ELECTRIC COOPERATIVE ASSN.

BELLEVUE MUNICIPAL UTILITIES

Jamie Haxmeier, (563) 872-3357

BROOKLYN MUNICIPAL UTILITIES

Troy Meldrem, (641) 522-9292

CASCADE MUNICIPAL UTILITIES

Shontele Orr, (563) 852-3614

CORNING MUNICIPAL UTILITIES

Tim Larsen, (641) 322-3920

DURANT MUNICIPAL ELECTRIC PLANT

Joel Meincke, (563) 785-6213

EARLVILLE MUNICIPAL UTILITIES

Jake Harris, (563) 923-3365

FONTANELLE MUNICIPAL UTILITIES

Mary Dodson, (641) 745-3961

GOWRIE MUNICIPAL UTILITIES

Troy Thomas, (515) 352-3065

(SIMECA)

GREENFIELD MUNICIPAL UTILITIES

Scott Tonderum, (641) 743-2914

LAMONI MUNICIPAL UTILITIES

Terry Fulton, (641) 784-6911

LENOX MUNICIPAL UTILITIES

Jeff Tull, (641) 333-2550

ORIENT MUNICIPAL UTILITIES

Jim Sitzman, (641) 337-5711

STUART MUNICIPAL UTILITIES

Pat Howey, (515) 523-2915

VILLISCA MUNICIPAL POWER PLANT

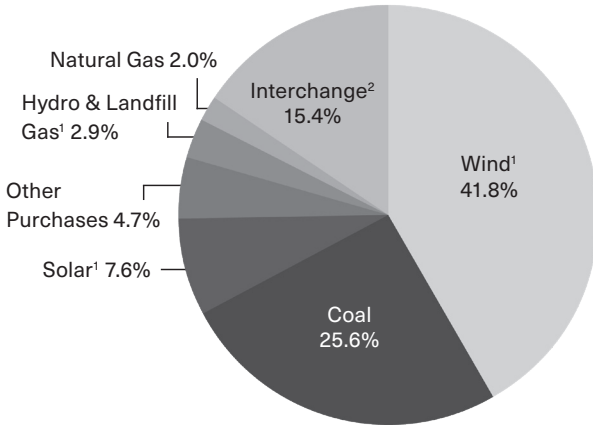
Kyle Yates, (712) 826-3192

WINTERSET MUNICIPAL UTILITIES

Chuck Johnson, (515) 462-2152

A BALANCED, RESPONSIBLE ENERGY PORTFOLIO

As a 24/7 energy provider, CIPCO is able to meet its Member-owners' needs with a diverse fuel mix of coal, hydroelectric, wind, solar, diesel, landfill gas, and natural gas energy sources.^{1,2}



**2024 data is actual/estimated*

¹CIPCO invests in the development of renewable energy projects in several ways. We operate six small-scale solar arrays near communities we serve and retain the renewable energy certificates associated with each. We also contract with energy producers for the electricity output from wind, solar, hydro and methane gas from a landfill (converted into electricity). CIPCO cannot claim these resources as renewable within our supply portfolio as we have either sold to third parties or do not receive the renewable attributes associated with the electricity produced from these renewable power sources. By selling these attributes (RECs), we not only support other organizations in meeting their renewable energy goals, but we also generate revenue to help us lower our wholesale power rate to our 13 Member-owner cooperatives and associations.

²A percentage of market purchases exist within the portfolio to meet to meet additional supply needs not covered by CIPCO-produced generation or existing contracts. Weather volatility and unplanned operational events at power plants may also impact market purchases.



GENERATION FACILITIES



WIND

Elk Wind Farm, Greeley
Bethel Wind Energy Center, Hawkeye
Heartland Divide Wind Energy Center,
Audubon & Guthrie counties
Independence Wind, Ryan
Prescott Wind Energy, Prescott
Rippey Wind Farm, Grand Junction

COAL

Louisa Generating Station, Muscatine
Walter Scott, Jr., Energy Centers #3 & #4,
Council Bluffs

HYDROELECTRIC

Western Area Power Administration (WAPA)

SOLAR

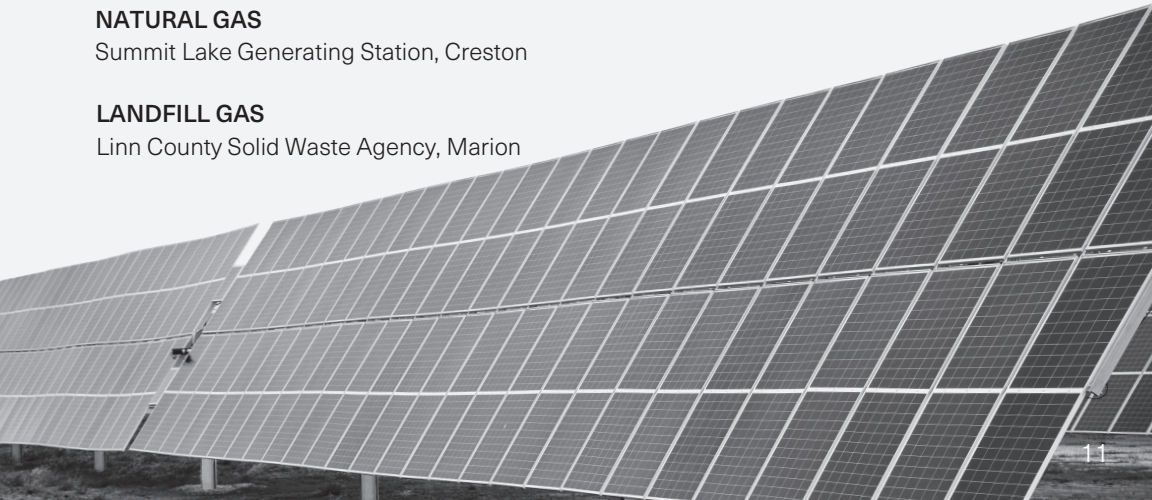
Clarke Solar Farm, Osceola
Eastern Iowa Solar, Wilton
Marshalltown Gateway Centre Solar Array
Marshalltown
Southwest Solar, Corning
Urbana Solar Acres, Urbana
Wapello Solar, Wapello
ZON VELD (Sun Field), Pella

NATURAL GAS

Summit Lake Generating Station, Creston

LANDFILL GAS

Linn County Solid Waste Agency, Marion



FOCUSED ON RELIABILITY FOR THE FUTURE

The growing demand for reliable power, driven by economic growth and technological advancements, threatens our ability to ensure a safe, reliable and cost-effective power supply. Despite efforts to diversify our generation mix with wind, solar and efficient natural gas, unrealistic energy policy mandates hinder progress. While we aim for a balance between intermittent and always-available generation, successfully and affordably achieving the mandate of the Federal government within the next decade is unattainable due to grid limitations, as well as both current and future electricity demand. Further, the technology chosen by bureaucrats is not only unproven, but does not exist at the scale required to accomplish the thresholds dictated by those from outside the energy sector.

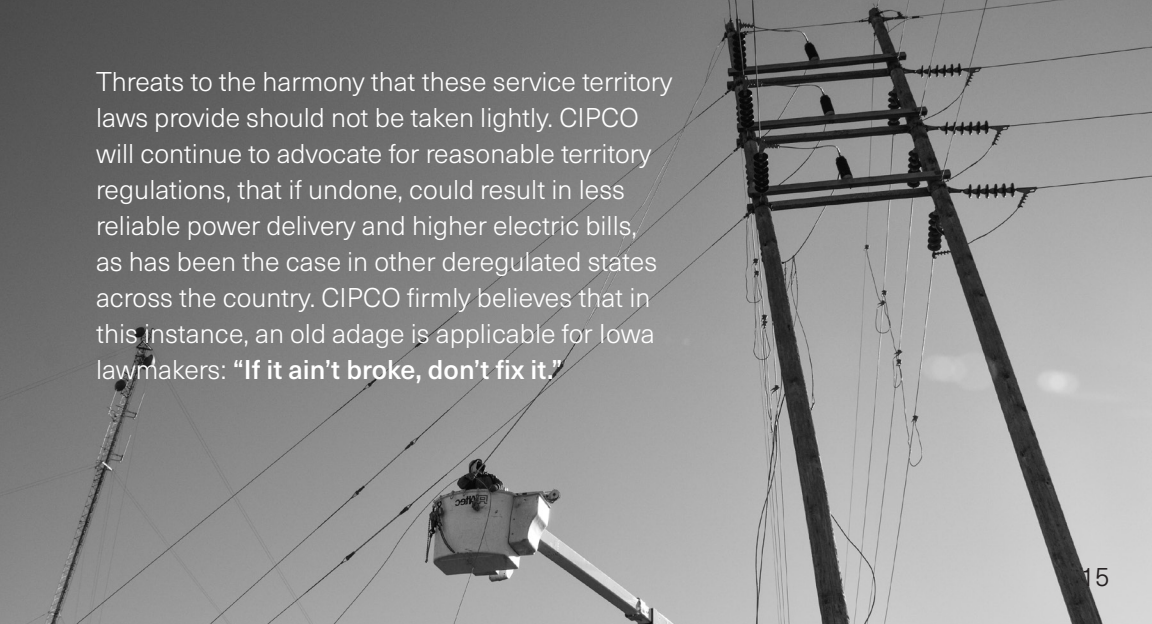


Summit Lake Generating Station maintenance, May

PROTECTING DEFINED SERVICE AREAS

Defined territories have allowed Iowans to consume safe, reliable and cost-effective power for 50 years by avoiding the overbuilding of duplicative and unnecessary infrastructure.

A dramatic spike in energy demand by companies in the technology and data industries is occurring at an unprecedented rate that is likely to continue in a growing digital economy. CIPCO will remain committed to responsibly reviewing any new requests for service in this space. We share our Member-owners concerns that while the utility industry faces extreme requests for power, some out-of-state entities continue to approach our policy makers about eliminating electric service territory protections that have proven effective for utilities and Iowa consumers alike.



Threats to the harmony that these service territory laws provide should not be taken lightly. CIPCO will continue to advocate for reasonable territory regulations, that if undone, could result in less reliable power delivery and higher electric bills, as has been the case in other deregulated states across the country. CIPCO firmly believes that in this instance, an old adage is applicable for Iowa lawmakers: **“If it ain’t broke, don’t fix it.”**

2025 STATE POLICY INITIATIVES

Deregulation of Electric Service Territory Protections

Iowa's current service territories have served the state for 50 years. Deregulation harms reliability and pushes additional costs onto small businesses, farms, and residential member-consumers.

Integrated Resource Plan (IRP) Evaluations

CIPCO recognizes the desire for utilities to file forward-looking plans regarding future power generation needs. IRPs are complex and expensive, and we support a process that shows member-consumers that their utility is responsibly preparing for the changing energy landscape. However, we oppose requiring the Iowa Utilities Commission to approve plans under contested case proceedings that can lead to unnecessary and costly legal disputes over details that are simply a snapshot in time in a rapidly evolving energy market.

Renewable Energy Siting & Land Use Prohibitions

CIPCO supports utility-scale projects with voluntary participation from landowners. We oppose legislation that strips landowner rights and arbitrarily bans options for farmers to diversify their operations.

Local Control Over Transmission Projects

CIPCO supports the restoration of right-of-first-refusal (ROFR) laws to ensure that local input is considered in decisions about when, where and how major transmission lines are built in Iowa. Continued efforts from out-of-state organizations to undercut local control on these kinds of decisions are unwelcome and irresponsible. Without a ROFR law on the books, Iowans may be denied the ability to realize the full economic benefit of these transformational infrastructure projects. Iowa consumers deserve the ability to have a seat at the table when a project is located on our soil. The ROFR law we support preserves cost accountability by requiring construction contracts to be competitively bid while implementing additional regulatory oversight.

2025 FEDERAL POLICY INITIATIVES

Reliable and Affordable Rural Power

Until new, reliable technologies emerge, CIPCO urges our delegation to support responsible energy policy that includes an all-inclusive approach to power generation. As CIPCO and all electric cooperatives grapple with the need for additional infrastructure to handle renewable generation growth and additional, always-available generation, we are concerned about our ability to meet future demand for electricity with the premature closings of existing generation plants here in Iowa and across the country.

*IAEC Fall Legislative
Fly In, September*



Permitting Reform

CIPCO supports reasonable modifications to federal permitting requirements that help expedite generation and transmission projects by avoiding lengthy and costly delays while often under duplicative and onerous review.

Farm Bill Reauthorization

Through the first partnerships with the Rural Electrification Administration and now the Rural Utilities Service, rural electric cooperatives have forged a valuable and productive relationship with USDA. As the Farm Bill is reauthorized, CIPCO asks Congress to increase REDL&G funding, maintain RUS programs, and commit to an all-inclusive energy strategy.

DRIVEN BY BUSINESS DEVELOPMENT

CIPCO and our Member-owners support the economic prosperity of Iowa's rural and suburban communities by attracting companies to the local areas we serve. We help power their growth through flexible, low-cost financing assistance. In addition, our investments in energy infrastructure create millions of dollars in financial capital to help power Iowa's economy. In total, CIPCO has helped fund over \$204.34 million in rural and suburban investment. In 2024:

CIPCO Revolving Loan Fund

\$250,000 to Stanton Area Industrial Foundation – Industrial Park Development
\$250,000 to Midwest Memorials LLC – Business Expansion

Rural Economic Loan & Grant (REDL&G) Program

\$2,000,000 to NEW Cooperative – Grain Loading Equipment
\$985,000 to Freedom Tool and Racing – Business Expansion

CONCERN FOR COMMUNITY

In 2024, CIPCO supported local community and nonprofit organizations and programs doing important work throughout our Member-owners' service territories. This year's contributions focused on nature centers, youth leadership, emergency services, and community education programs. CIPCO continues to support the St. Luke's Foundation Rural Healthcare Grant program and Iowa State University's PrISUM Solar Car program.

In May, an EF-4 tornado carved a path through Greenfield. The volunteer fire department's building was a total loss. Greenfield Municipal Utility, Farmers Electric Cooperative, and CIPCO partnered with CoBank's Sharing Success program to donate \$15,000 toward the construction of a new building for the Greenfield Volunteer Fire Department.



GUIDED BY OUR BOARD OF DIRECTORS



Paul Heineman*
Ogden

Gary McKenna
Vinton

Dan Westphal*
Bridgewater

Craig Stallman
Williamsburg

Gary Kester*
Burlington

Duane Ver Ploeg
Pella

**Indicates members of the CIPCO Legislative/Public Policy Committee*



Tim Larsen
Corning

Arden Greiner
Colo

Kirk Hiland*
North Liberty

Steve Bireline*
Adair

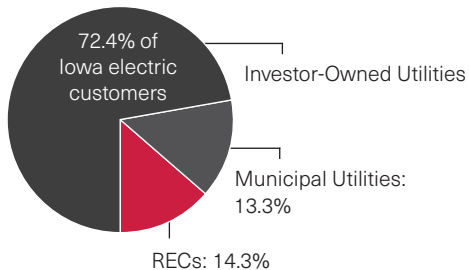
Gene Manternach*
Cascade

Dale Walkup
Redding

Randy Rouse
Allerton

HOW IOWA UTILITIES DIFFER

Iowans receive electric service from three types of utilities. Each Iowa utility has been assigned a defined service territory since 1977.



OWNERSHIP	TAX STATUS	GOVERNED BY
Public Corp	For-profit	Board of Directors
Local government	Not-for-profit	City Council or Board
Membership	Not-for-profit	Local Board

**Source: Iowa Utilities Board, 2022*

With dramatically fewer customers per mile of line, RECs focus on reliability and cost efficiency to deliver electric service.

Average Number of Customers Per Mile*

Municipals 54

Investor-owned 27

RECs 4

Number of Electric Utilities in Iowa*

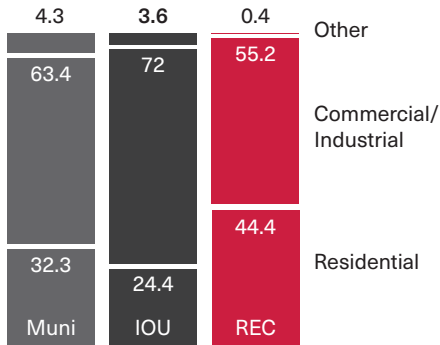
Municipal Utilities 136

Electric Cooperatives 43

Investor-Owned Utilities 2

*Source: Iowa Utilities Board, 2022

kWh sales by type (%)*



Cedar Rapids Office:
(319) 366-8011
1400 Highway 13 SE
Cedar Rapids, IA 52403

Des Moines Office:
(515) 362-7698
2600 Grand Ave.
Suite 300
Des Moines, IA 50312

