



Touchstone Energy®
Cooperatives
of Iowa

● APRIL 2023

iowa

ELECTRIC COOPERATIVE LIVING

**Tips to create your
future home now**

**Electric co-ops work to
stay ahead of Mother Nature**

Breakfast and brunch recipes

Win a Smart Lock ► See Page 3

CONTENTS



VOLUME 76 • ISSUE 4

3

STATEWIDE PERSPECTIVE

Co-ops won't gamble on reliability or affordability

3

EDITOR'S CHOICE CONTEST

Win a Smart Lock

10

RELIABILITY MATTERS

Staying one step ahead of mother nature

14

EFFICIENCY MATTERS

Energy-efficient farming equipment

EDITOR
Ann Foster Thelen

ART DIRECTOR
Joel Clifton

IAEC EXECUTIVE VICE PRESIDENT
Chuck Soderberg

IAEC DIRECTOR OF COMMUNICATIONS
Erin Campbell

IAEC BOARD OF DIRECTORS
Roger Solomonson, District 3 – President
Gordon Greimann, District 6 – Vice President
Kenny VandenBerg, District 1 – Secretary/Treasurer
Deena Moore, District 4 – Asst. Secretary/Treasurer
Tony Lem, District 2
Jim Miller, District 5
Bruce Amundson, District 7
Marion Denger, Prairie Energy Cooperative – NRECA Representative
Kevin Wheeler, Access Energy Cooperative – Managers' Representative

Iowa Electric Cooperative Living magazine (ISSN: 2770-8683) is published monthly by the Iowa Association of Electric Cooperatives, a not-for-profit organization representing Iowa's member-owned local electric cooperatives. Association address: 8525 Douglas Ave., Suite 48, Des Moines, IA 50322-2992. The phrase **Iowa Electric Cooperative Living** is a mark registered within the state of Iowa to the Iowa Association of Electric Cooperatives. The magazine does not accept advertising.

Editorial Office
8525 Douglas Ave., Suite 48, Des Moines, IA 50322-2992. Telephone: 515-276-5350.

Email Address
editor@ieclmagazine.com. *Iowa Electric Cooperative Living* magazine does not assume responsibility for unsolicited items.

Website
www.ieclmagazine.com

Postmaster
Send address changes to *Iowa Electric Cooperative Living* magazine, 8525 Douglas Ave., Suite 48, Des Moines, IA 50322-2992. Periodicals Postage Paid at Des Moines, Iowa, and at additional mailing offices.

Change of Address
Every local electric cooperative maintains an independent mailing list of its members, so please send your change of address directly to your local electric cooperative's office. *Iowa Electric Cooperative Living* magazine cannot make an address change for you.

© Copyright 2023, Iowa Association of Electric Cooperatives. No portion of the editorial, photographic or other content of *Iowa Electric Cooperative Living* magazine or its website may be reproduced without written permission of the editor.



ON THE COVER

Special thanks to Shirley Kellenberger, a Lyon Rural Electric Cooperative member-consumer, for supplying this month's cover image. Submit high-resolution photos for consideration to editor@ieclmagazine.com. You could receive \$100!

ELECTRIC CO-OPS WILL NEVER GAMBLE ON THE RELIABILITY OR AFFORDABILITY OF YOUR POWER

BY CHUCK SODERBERG



In late February, *The Des Moines Register's* editorial board published a reckless column calling for MidAmerican Energy and other Iowa electric

utilities to abandon coal, "even if doing so also means taking some gambles on brownouts and blackouts, price volatility and newer technology."

I'm here to tell you that Iowa's locally owned electric cooperatives will never gamble on our responsibility to provide reliable and affordable service to member-consumers. Our mission to power lives and empower communities guides the decision-making of our elected co-op boards, not a newspaper's editorial board.

Electricity has become an essential service in our lives. Your electric cooperative is committed to providing power around the clock for your elderly neighbor on a fixed income to the local ethanol plant and every other member in between. Your community relies on electricity to power critical services and the local economy, and we don't take that responsibility lightly.

We've talked before in the pages of this magazine about how the transition to a renewable energy economy will take decades. Last summer's generation shortfall warning from the North American Electric Reliability Corporation (NERC) underscored the need for a diversified energy mix to ensure reliable electricity. And we all heard about the devastation that resulted from emergency blackouts during the February 2021 polar vortex crisis in Texas, as demand for electricity greatly exceeded supply.

Your electric cooperative uses an "all of the above" generation strategy to

ensure the availability of power when you flip the light switch or turn the thermostat dial. Here are two realities we must work with in the electric industry today:

1. Many renewable energy sources like wind and solar are *intermittent*; they don't generate electricity when the sun doesn't shine or the wind doesn't blow. Other generation sources like coal, natural gas and nuclear are *dispatchable*, which means we can turn them on and ramp up production when needed.
2. Generally speaking, electricity must be simultaneously generated as it is consumed. This requires supply to be in constant balance with electric demand. We must be able to dispatch more electric generation quickly when needed, usually on very hot or very cold days as people increase the use of air conditioners or electric heat. Battery technology

has yet to be developed that can adequately store electricity from intermittent sources on a utility-scale for a long range of time.

While we invest in battery technology advancements to make renewable sources more dispatchable for utility-scale, Iowa's electric cooperatives continue to maintain a variety of generation sources to protect the reliability and affordability of your power. Electric co-ops are transitioning to more renewable sources of generation when it is feasible to do so.

And we will continue to advocate for an "all of the above" energy strategy with state and federal policymakers because we refuse to gamble reliability, affordability or the trust you place in us.

Chuck Soderberg is the executive vice president and general manager of the Iowa Association of Electric Cooperatives.

EDITOR'S CHOICE CONTEST

Win a Smart Lock!

A smart lock is a secure, easy-to-install and convenient way to control who can access your home. The Ultraloq U-Bolt Pro Wi-Fi Smart Lock contains a biometric fingerprint scanner, a keypad and a traditional keyway that hides behind a fold-down faceplate.

Visit our website and win!

Enter this month's contest by visiting www.ieclmagazine.com no later April 30. You must be a member of one of Iowa's electric cooperatives to win. There's no obligation associated with entering, we don't share entrant information with anyone and multiple entries from the same account will be disqualified. The winner of the CTECHi Portable Power Station from the February issue was Dennis Moon from T.I.P. Rural Electric Cooperative.



ENTER ONLINE BY APRIL 30!

75 YEARS AGO IN RURAL IOWA

2023 marks an important milestone for this publication! Seventy-five years ago, the Iowa Association of Electric Cooperatives began publishing a statewide newspaper for member-consumers, titled "IRECA News." Excerpts from the following article appeared in the March 1948 edition (verbatim content from our archives):

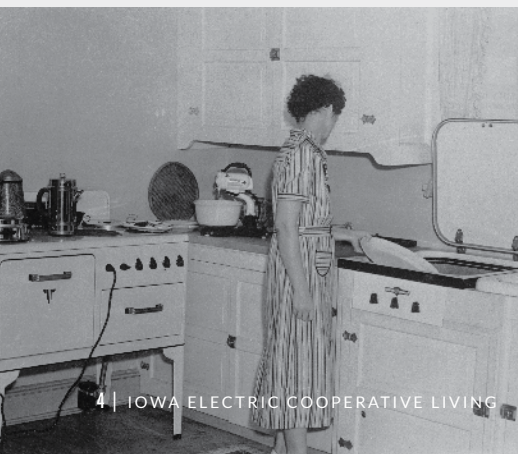
Freedom of Rural Women Through Electricity Told At NRECA Meeting

The farm woman has been emancipated, and most of her new freedom can be credited to rural electrification.

This was the theme of the talk by Mrs. Clara Talleur of Illinois at the sixth-annual meeting of the National Rural Electric Cooperative Association (NRECA) in Chicago March 8, 9 and 10 [where many Iowa rural electric cooperative members attended]. Mrs. Talleur, a director of Southwestern Electric Cooperative of Illinois, spoke on "What Electricity Means to the Farm Wife" at the women's panel discussion group, held March 9 at the Stevens Hotel.

Mrs. Talleur pointed out that electricity has freed the farm wife from drudgery and given her time for real homemaking. It has given her time to be an important person in her community.

"The farm wife has lost her inferiority complex. She is proud of her position," declared Mrs. Talleur.



DIY OR HIRE A PROFESSIONAL?

BY LES O'DELL



Homeowners looking at home improvement projects have a lot of decisions to make, not the least of which is whether to hire the job out or do it themselves. With pros and cons on both sides, the choice is based upon experience, comfort level and budget.

"What the decision between DIY or a professional ultimately comes down to is an individuals' comfort level and ultimately what they want to accomplish," says Andrew Brindley of HE Homes. He tells people looking to tackle a project on their own to plan on making a mistake at least once if they've never done that particular job before.

There are some jobs that are simple for people who have done it before but are not intuitive to someone who has only watched online videos.

Keep safety in mind

Brindley suggests novice DIYers tackle jobs where appreciation and lessons can be garnered easily online and ones where mistakes may only be cosmetic.

"With some projects, it is very easy to look up some tutorials, read some articles and know what you are doing," he says. "But when it comes to actual mechanical trades: structural plumbing, electrical and things like that, those are components of a home that if they are

not done correctly, can either create a safety issue or cause a whole bunch of damage."

Brindley gives the example of a plumbing leak. "If you accidentally cut the wrong line, you could have up to 5,000 gallons of water every minute flowing through your home."

"While it may cost a little bit more to use a professional rather than making it a DIY project, you have to look at the cost of the whole project," he adds.

Another factor to consider is the necessary equipment. "If a homeowner doesn't have a lot of tools – or the right tools – for the job, hiring a contractor is probably actually going to be cheaper because they have tools designed specifically for the job."

On the other hand, experts say there are a lot of things homeowners can do themselves: painting, changing faucets and simple repair, but they say to take your time. The old adage "measure twice to cut once" still holds true.

If, on the other hand, you do choose to hire the job out, it is a good idea to check references and get referrals.

Find more home improvement tips on Pages 6-7 of this issue.

STATEWIDE ASSOCIATION BOARD ADVOCATES FOR CO-OPS WITH GOVERNMENT LEADERS

On the day before REC Day on the Hill advocacy event for rural electric cooperatives in March, the Iowa Association for Electric Cooperatives (IAEC) board met with several legislative and executive branch leaders. During the visits, IAEC directors talked about the cooperative advantages of local governance and ownership, as well as how Iowa's electric co-ops power lives and empower their rural communities.

Board members spoke with House Speaker Pat Grassley, House Majority Leader Matt Windschitl, House Minority Leader Jennifer Konfrst, Senate Minority Leader Zach Wahls, Senate Majority Leader Jack Whitver and Senate President Amy Sinclair. The group also connected with Lt. Governor Adam Gregg and Attorney General Brenna Bird in the executive branch.

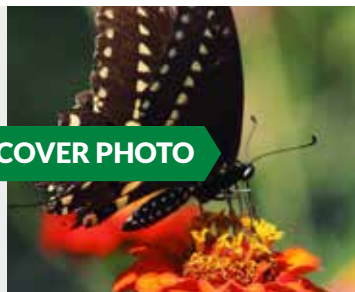
"Our face-to-face sessions are critical to ensuring that Iowa's government leaders understand issues that are important to electric cooperatives and the members we serve," says IAEC Board President Roger Solomonson. "These meetings are valuable opportunities to educate about the advantages of the co-op business model."



ENTER TO WIN

WIN \$100 FOR A PUBLISHED COVER PHOTO

We're always looking for stunning images for the cover of *Iowa Electric Cooperative Living* magazine. If we select your photo for a cover, we'll award you with \$100. The photos must be clear, of an Iowa place served by an electric cooperative and in high resolution. To be considered, email photos to editor@ieclmagazine.com with "Cover Submission" in the subject line.



You can't AVOID what you CAN'T SEE

Starting a job — big or small — without first getting utilities marked could result in serious injury, service disruptions for you and your neighbors, and a hefty fine.

Call 8-1-1 before you dig.

Learn more at: [SafeElectricity.org](https://www.SafeElectricity.org)

YOUR FUTURE HOME NOW

BY LES O'DELL

Even in smaller homes, kitchens are growing as social gathering spaces with large islands for people to gather around.

Our homes used to be simply a place to sleep, eat, relax and keep our belongings. But in recent years, they've transitioned into true "lifestyle centers," where we work, work out, play and entertain.

Admittedly, some of our residences are more up-to-date than others, featuring modern touches as well as the latest trends and designs, but what about those to come? What does it take to live in your future home now?

Experts say there are a variety of things to make your residence "future-ready" – everything from the appliances we choose to the spaces we create.

Andrew Brindley, owner of HE Homes, says how people look at their homes and their function has changed. As a

byproduct of the COVID-19 pandemic, he says people are seeing their homes as more important than ever and spending more time in them.

"Where a home historically may have been just a stopping point for people, we've seen a change to where now people are putting a much larger importance on prioritizing families and people being together," Brindley says.

Multiple generations and a variety of spaces

A desire for togetherness has even spurred a shift toward designing homes as intergenerational residences, Brindley says.

"Homeowners are asking for more spaces for their mother-in-law to come stay with them or for their son

to come home for a couple of years after college to save money," he says. "These are things that up until the last few years might have been seen as a little bit negative or even a bit taboo, but they are becoming a sense of comfort for families to have the ability for everyone to be together and to take care of their family."

That means new designs often include wider hallways, bigger doors and fewer stairs. Others are dedicating spaces for specific activities. Brindley says home theater rooms and areas for singular activities are popular.

"We're seeing homeowners create dedicated spaces for some of their hobbies and interests. They actually are giving time, energy and effort

into the things that give value to their families' lives," he explains.

In a post-pandemic world, home offices are extremely valuable. With more and more people working remotely from home or in hybrid arrangements, dedicated workspaces are a must.

Less square footage but more living space

At the same time, however, many new homes are more compact. It might be a function of interest rates, but sizes are coming down and builders are trying to be more efficient with space.

That means the open-concept floor plan continues to be popular because it lends itself to being more comfortable in a small home.

Even in smaller homes, kitchens are growing. Designers say people are using their kitchens more, eating at home more often and entertaining regularly, making the kitchen a center of attention. Larger kitchen spaces with huge islands that people can gather around are gaining popularity.

Pantries are also getting bigger – even becoming, in some cases, stand-alone rooms or walk-in closets. Many appliances that used to clutter kitchen countertops are finding a new home in the pantry, becoming almost a secondary kitchen. Adding a second dishwasher is also growing in popularity.

Smart homes

With all the technology in our offices, cars and pockets, it is no surprise that our homes are also becoming tech

savvy. In this sense, the homes of the future are being built now, says Donna Youngquist, owner of R&D Custom Homes.

"We're doing a lot of smart homes with security systems, sound systems and LED lighting. People want all of this as well as smart appliances in the kitchen," says Youngquist. "They want smart thermostats and smart doorbells. Honestly, many want to be able to do everything with their phones."

And by everything, she means *everything*. Consumers can now dim the lights, raise the window blinds, start the dishwasher, answer the door, turn on sprinklers and lower the thermostat, all with apps on their phones.

Homes – and the electronics in them – are becoming so smart that some builders are even leaving things out of homes. Just a few years ago, it was not uncommon to wire the home with Category 5 internet networking jacks and to make sure coaxial cables for televisions were in practically every room. Not anymore, thanks to wireless internet technology.

"Smart homes mean different things to different people, but people are seeing the added value of things like smart doorbells, smart thermostats and other convenience items," Brindley says. "These items have become an expectation of homebuyers. They want to be able to look on an app and see if their garage door is opened or closed, for example, and if they forgot, they want to be able to close it remotely."

Even little things make homes future-ready. Incorporating USB outlets throughout the home, especially in bedrooms, living spaces and the kitchen, is worthwhile. Some designers even include "technology closets" in homes as a place for modems, routers and other technological bases.

Energy consumption and solar

All that technology requires electricity, and consumers are keeping energy efficiency in mind as they look to build, remodel or replace existing appliances and lighting.

Consumers are asking for the most energy-efficient products and appliances that they can afford. And solar power continues to pique homeowners' interests.

Even if homeowners are not utilizing solar power now, some designers are encouraging them to plan for later adoption by considering the orientation of their home and by making their rooflines ready for solar panels.

Experts still stress more traditional approaches to reducing energy use. Energy efficiency practices, such as sealing windows and incorporating LED light bulbs, are low-hanging fruit homeowners can do to save energy.

It is all part of making homes future-ready. With a little extra care and foresight, homeowners can plan spaces that work for their families now and in the future.

Les O'Dell is a professional journalist and a guest contributor to this month's issue of Iowa Electric Cooperative Living.



Newer homes are being designed to entertain inside and outside.



Rooms with flexible spaces are becoming more popular. What used to be delegated as a bedroom, might be an office during the day and music studio at night.

BREAKFAST & Brunch RECIPES

EASY EGG BAKE

- 4 slices bread, cubed
- 3 cups ham or sausage, cooked
- 1 cup Swiss cheese, shredded
- 1 cup cheddar cheese, shredded
- 8 eggs
- 3 cups milk
- 1 teaspoon dry mustard
- dash salt
- dash pepper
- 1 teaspoon Worcestershire sauce
- 1 cup corn flakes, crushed, optional
- 2 tablespoons butter, optional

Place bread cubes in bottom of 9x13-inch pan. Add meat and cheese on top of bread. Beat eggs, milk, mustard, salt, pepper and Worcestershire sauce. Top with cereal and butter, if desired. Bake at 325 degrees F for 70 minutes. Can be made the night before. *Serves 10-12*

Ardine Dillingham • Hartley
Osceola Electric Cooperative, Inc.

HOLE IN ONE BREAKFAST

- 1 round bakery bun or roll, unsliced
- 1-2 eggs
- 2-3 slices bacon
- spinach
- shredded cheese
- pepper, to taste
- seasoning, to taste

Make a well in the bread by removing the top center of the bun, without breaking through the bottom. Fill this hole with egg, bacon and spinach. Top with cheese and spices of choice. Bake at 350 degrees F for 30-35 minutes. Add your choice of vegetables as desired. *Serves 1*

Jane Person • Batavia • Access Energy Cooperative

MAKE-AHEAD BREAKFAST ENCHILADAS

- 1 pound bulk breakfast sausage
- 1 medium red pepper, diced
- 1 small onion, diced
- ½ cup green onions, chopped
- 2½ cups cheddar cheese, shredded, divided
- 10 flour tortillas
- 2 cups half and half
- 6 eggs
- 1 tablespoon flour
- salsa
- sour cream

In a large pan, brown sausage along with peppers and onions. Cool slightly and combine with 2 cups cheese in a large bowl. Scoop out ⅓ cup mixture onto a tortilla. Roll up tortilla and place seam side down in a greased 9x13-inch baking dish. Repeat with remaining tortillas, squeezing them all into dish. Whisk together half and half, eggs and flour. Pour over tortillas, then cover with foil and refrigerate overnight. In the morning, bake covered at 350 degrees F for 35 minutes. Remove foil and sprinkle remaining ½ cup cheese over enchiladas and bake uncovered for an additional 10 minutes or until cheese is melted. Serve with salsa and sour cream. *Serves 10*

Susie Reiling • Carroll
Raccoon Valley Electric Cooperative

BLUEBERRY BREAKFAST COBLER

- 4 cups blueberries (fresh or frozen)
- 1½ cups plus 2 tablespoons sugar, divided
- 1 tablespoon cornstarch
- ½ cup butter, softened
- 2 eggs
- 1 teaspoon vanilla
- 1¼ cups flour
- 1 teaspoon baking powder
- ½ teaspoon salt
- 2 tablespoons butter, melted

Lay blueberries in a 9x13-inch pan. Mix ½ cup sugar and cornstarch, then mix into blueberries. Mix ½ cup softened butter, 1 cup sugar, eggs, vanilla, flour, baking powder and salt. Drop mixture over blueberries. Drizzle with melted butter and sprinkle with 2 tablespoons sugar. Bake at 350 degrees F for 40 minutes.

Lauren Zollinger • Rock Rapids
Lyon Rural Electric Cooperative

EASY BREAKFAST SMOOTHIE

- 1 banana
- ¼ cup peanuts, almonds or walnuts
- 1 cup milk
- ¾ cup rolled oats
- 1½ teaspoons combined spices: cinnamon, ginger, allspice, cardamom
- 1 tablespoon maple syrup, optional

Put all ingredients in container and let sit overnight. In the morning, the oats and nuts will be softened. Blend with food processor, blender or hand blender. Can substitute nuts for ¼ cup peanut butter. Serves 2

Jeffrey Hedquist • Fairfield
Access Energy Cooperative

BREAKFAST IN A JIFFY

- 1 pound sage breakfast sausage
- 2 cups apples, cored and sliced, but not peeled
- 1 cup sharp cheddar cheese, shredded
- 2 extra-large eggs
- 1 cup milk
- 1 package Jiffy corn muffin mix

Cook sausage, drain and crumble. Place sliced apples in rows to cover bottom of greased 8x8-inch pan. Cover apples with cheese and sprinkle sausage over cheese. Beat together eggs and milk. Place corn muffin mix into a small bowl and pour milk mixture over it. Blend well and pour over apples, cheese and sausage layers. Bake at 350 degrees F for 30-35 minutes or until lightly browned. Serves 6-9

Jeannie Stall • Huxley • Consumers Energy

HOT FRUIT COMPOTE

- 1 can Mandarin oranges
- 1 jar maraschino cherries
- 1 large can sliced peaches
- 1 medium can pineapple chunks
- 1 stick butter or oleo
- ¼ cup flour
- ½ cup sugar
brown sugar

Drain fruit juices, saving all the cherry juice and 1 cup of the other combined fruit juices. Place fruit in baking dish. In a pan, melt butter or oleo. Add flour and cherry juice. Add the other fruit juice and sugar. Simmer until thick then pour over fruit. Sprinkle with brown sugar. Bake at 350 degrees F for 15-20 minutes, until bubbly. Serves 8-10

Barb Rich • Mount Pleasant
Access Energy Cooperative

BACON EGG CUPS

- 8 eggs
- salt and pepper, to taste
- ½ cup cheddar cheese, shredded
- 12 slices bacon

Whisk eggs, salt, pepper and cheese. Spray muffin tin cups with non-stick spray. Wrap each slice of bacon around the insides of muffin tin cups. Fill each bacon-lined muffin cup ¾ of the way with egg mixture. Bake at 350 degrees F for 30-35 minutes or until eggs are golden brown. Serve warm. Can be saved and warmed up in microwave for 30 seconds per cup. Serves 12

Arie Schiller • Donnellson • Access Energy Cooperative

WANTED:

DESSERT RECIPES

THE REWARD:

\$25 FOR EVERY ONE WE PUBLISH!

Deadline is April 30

Please include your name, address, telephone number, co-op name and the recipe category on all submissions. **Also provide the number of servings per recipe.**

EMAIL: recipes@ieclmagazine.com

(Attach your recipe as a Word document or PDF to your email message.)

MAIL: Recipes

Iowa Electric Cooperative Living • 8525 Douglas Ave., Suite 48, Des Moines, IA 50322-2992



STAYING ONE STEP AHEAD OF MOTHER NATURE

BY JENNAH DENNEY

Mother Nature tends to have a mind of her own. In Iowa, we witness this with tornadoes, derechos and ice storms. Utility power lines are constantly at risk from severe storms – particularly fallen and overgrown tree limbs, which can lead to power outages. It's estimated that 50% of outages can be attributed to overgrown vegetation, which is why Iowa's electric co-ops regularly trim and maintain their local systems.

This tried-and-true method requires a significant amount of on-the-ground labor, including manual data collection, in which dozens of workers assess the vegetation that needs to be cleared while walking below the infrastructure. It also takes manual verification of work quality and completion by contractors.

This is how co-ops have handled vegetation management for the past few decades. It has been an effective method, but in the era of extreme weather events and accelerating digitalization, electric co-ops are looking to innovative vegetation management methods to improve power reliability for the members they serve.

Leveraging new technologies


Technology advancement will continue to impact vegetation management, and electric co-ops are committed to staying informed and undertaking modernization efforts. By utilizing technology, co-ops may be able to dispatch crews to perform trimming at the ideal moment and location, preventing additional outages while

enhancing productivity, cutting costs and providing better service. Timely monitoring and maintenance are necessary to identify assets prone to sustaining damage or catching fire, so co-ops are tasked with selecting the right technology to make this process more efficient.

The ideal technology will ensure a consistent supply of energy while managing the environment. Today, there are several cutting-edge vegetation management tools, each with its advantages.

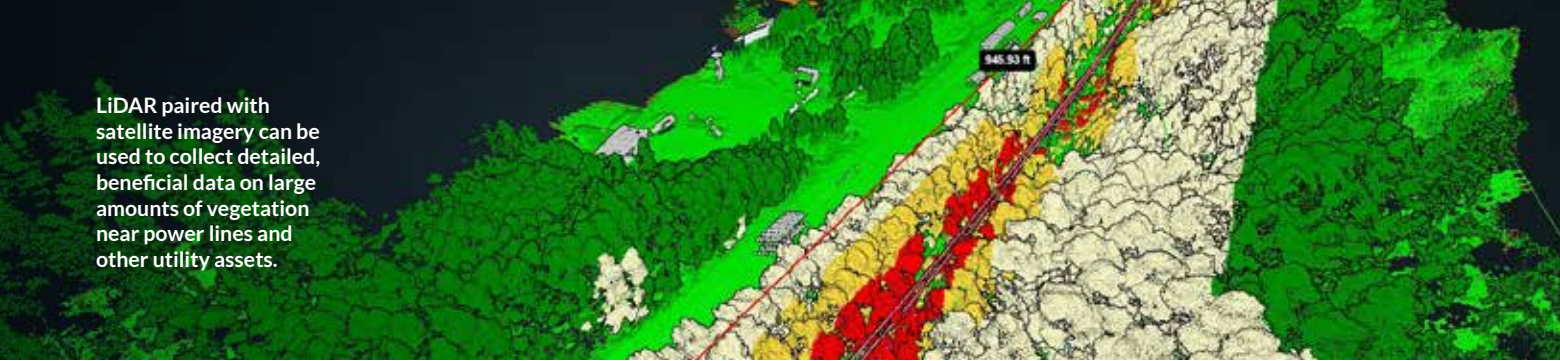
Light detection and ranging

LIDAR, which stands for "light detection and ranging," gives exact, three-dimensional data about the shape of the surface around utility



Drones fly very close to utility assets to take the clearest images and provide data to help keep an eye on how close vegetation is to equipment.

LiDAR paired with satellite imagery can be used to collect detailed, beneficial data on large amounts of vegetation near power lines and other utility assets.



assets. LiDAR is a popular way to scan portions of forests to determine how tall trees are and acquire information about their health, like whether a tree has leaves. LiDAR doesn't provide data on how healthy plants are in general, but the technology can be paired with high-resolution multispectral satellite imagery to obtain accurate information about the health of the plants surrounding power lines. Timely data like this is extremely beneficial and can help electric co-ops make more proactive planning decisions.

Satellite data

Satellites provide coverage 24 hours a day and can supply two kinds of images: a wide macro view of the area near utility assets and a more detailed micro view. Satellite data can often be used in place of other monitoring methods. With satellite technology, co-ops can learn a lot about local vegetation, including:

- **Health:** This knowledge makes it possible to predict vegetation growth based on actual conditions rather than guesses.
- **Dryness:** This information is valuable for determining the likelihood of a wildfire – and how to protect wildlife around utility infrastructure. While wildfires aren't typical in Iowa, recent major events as close as Missouri showed us they could also occur here.

Satellites are always in orbit around the Earth, so data can be updated quickly, in real-time. This makes it possible to act more precisely and on time.

Today, satellite images can have a spatial resolution as small as 1.6 feet, which makes it easy to spot when vegetation is growing in the right of way near power lines and utility equipment. Typically, satellites can speed up the process of inspecting power lines because they give the utility a solid foundation for making data-driven decisions about vegetation management. Drones and helicopters are effective but can take longer to fly along a network of power lines. A satellite can take pictures of the same area in just a few hours.

Fixed-wing aircraft and drones

Electric co-ops are also using fixed-wing aircraft and drones to keep an eye on and control the growth of trees and plants near power lines. Drones fly very close to assets so they can take the clearest images, provide data on how close vegetation is to equipment and check the health of trees to see if they are likely to fall.

Many co-ops utilize drones with cameras, which began as a novelty tech for utilities but are now considered essential tools. When it comes to taking

care of surrounding vegetation, drones are often used for detailed surveys rather than large-scale monitoring like satellites. Once LiDAR or satellites (often together) have collected data on a large amount of vegetation near power lines, drones are used to inspect a single area and do all the necessary checks without putting operators in danger.

Finding the best fit

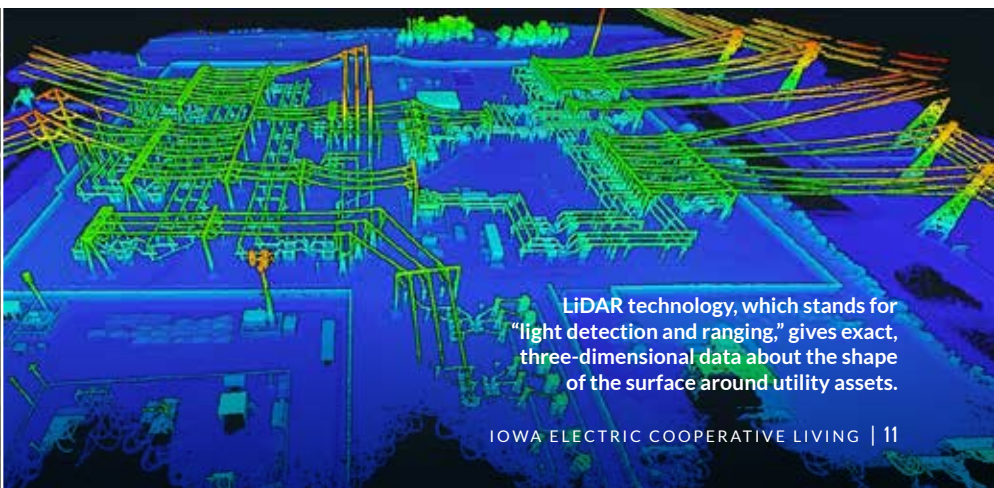
Electric co-ops place a high focus on vegetation management. It is the most crucial tool for reducing the likelihood of power outages. A thorough understanding of the vegetation's past, present and projected future is essential for a successful approach to reducing these risks.

The growth of LiDAR, drone and satellite data presents an opportunity to close the loop with continuous data-driven vegetation management intelligence and to increase the power line system's dependability and safety. Ultimately, all three technologies for managing vegetation serve different purposes, and electric co-ops choose the ones that work best for them.

Jennah Denney writes on consumer and cooperative affairs for the National Rural Electric Cooperative Association, the national trade association representing more than 900 local electric cooperatives.



This image shows the view from a drone. As they fly near equipment, drones can help utilities determine the health of trees to see if they are likely to fall.



LiDAR technology, which stands for "light detection and ranging," gives exact, three-dimensional data about the shape of the surface around utility assets.

EASY BEHAVIOR CHANGES TO SAVE ENERGY

BY MIRANDA BOUTELLE

You can change your energy use by changing your behavior. Many people focus on the total dollar amount when looking at electric bills. When managing your energy costs, shifting your focus to how you use energy can be helpful. The following are some actionable behavior changes to help you save on your next bill.

Set goals

Instead of thinking about your bills in terms of dollars, think about them in terms of kilowatt-hours (kWh). A kilowatt-hour is the unit of energy used for most electric bills. Review your monthly kWh use to get an idea of how much you use every month. Once you've reviewed your energy use, set goals for the next month. Try to use less energy than the month before, and then check your results on your next bill.

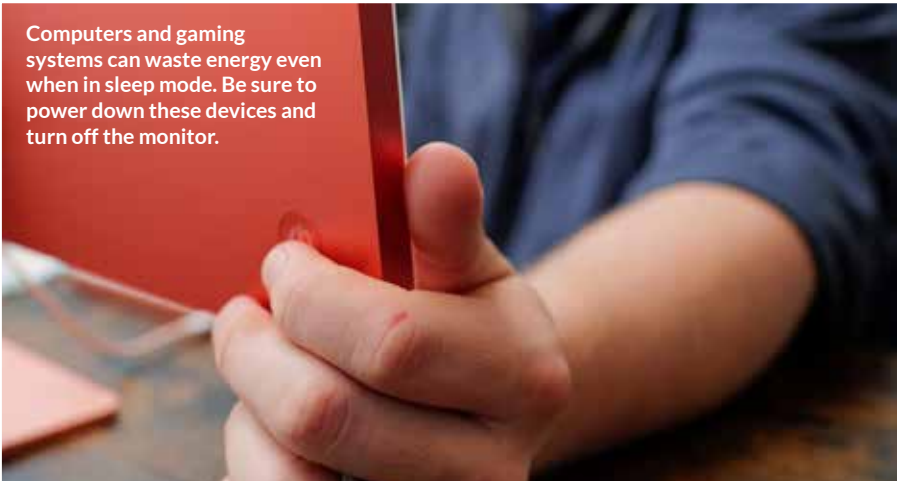
Know when to use less energy

Some electric utilities offer time-of-use rates, which means electricity costs are dependent on the time of day. This pricing structure more closely reflects the cost to electric utilities and helps consumers understand that energy costs more when the demand is higher.

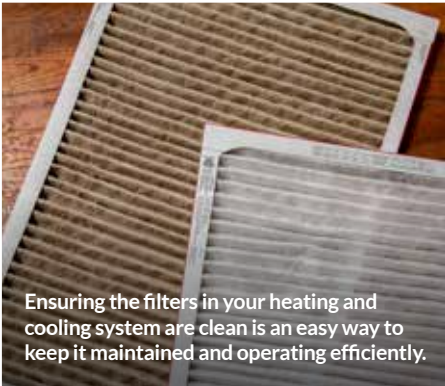
Even if your electric bill does not include time-of-use rates, it can be beneficial to delay energy-intensive chores or tasks to when demand is lower. Peak hours are typically in the morning as we get ready for work and in the evening when we get home and start preparing food and turning on entertainment devices. Doing laundry and running the dishwasher are easy activities to delay until after peak hours.

Power "off" for energy savings


When looking for energy savings, remember that "off" is the most efficient setting. Turning off lights is a classic strategy, especially if your lighting is incandescent. Consider switching to energy-saving LED lightbulbs.



Computers and gaming systems can waste energy even when in sleep mode. Be sure to power down these devices and turn off the monitor.



Ensuring the filters in your heating and cooling system are clean is an easy way to keep it maintained and operating efficiently.



If you can turn the temperature down a few degrees in winter and up a few in summer, you will save on energy costs.

Computers and gaming systems can waste energy even when in sleep mode. The higher the wattage and the more hours the device is on, the more energy used. Laptops use the least energy, followed by personal computers at about 200 watts. Gaming consoles typically use less energy than gaming PCs. Remember to turn off the monitor as well.

Many electronics continue to draw power even when they are turned off. According to the Department of Energy, leaving them plugged in could add 5% to 10% to your monthly bill. Installing smart power strips is an easy way to ensure devices are completely turned off and not drawing power.

Adjust the temperature

When it comes to lowering your energy use, the settings on your thermostat are another great place to check. Remember that the weather affects your electric bill for heating and air conditioning.

The closer you can keep the indoor temperature to the outdoor temperature, the more you will save. You want to protect your home from damage in extreme heat and cold, but if you can turn the temperature down a few degrees in winter and up in summer, you will save on energy costs.

Ensuring the filters in your heating and cooling system are clean is an easy way to keep your system maintained and operating efficiently. Adding annual servicing by a professional maximizes the efficiency and can lengthen the life of your system.

Understanding your energy use and making small adjustments to your routine will help you reach your energy use goals.

Miranda Boutelle writes on energy efficiency topics for the National Rural Electric Cooperative Association, the national trade association representing more than 900 local electric cooperatives.

EXPLORE IOWA THIS SPRING AND SUMMER

The spring/summer edition of the Iowa Travel Guide is now available to inspire travelers who want to plan an Iowa road trip. Many of the destinations covered in this statewide guide feature businesses and community sites served by Iowa's electric cooperatives.

The publication includes features on new events and attractions for 2023, including:

- RAGBRAI's 50th anniversary
- The Iowa State Fair
- The Loess Hills
- Stops along the Lincoln Highway
- Golf courses
- Adventures on wheels

The guide also contains suggested attractions, restaurants, lodging properties, events, an itinerary for each of the five travel areas and campground listings.

"Demand for travel continues to be strong," says Amy Zeigler, state tourism manager for the Iowa Tourism Office. "According to the U.S. Travel Association, nearly half of Americans with travel plans agree that taking time off is more important than ever, and more than half say travel is a priority in their budget. The redesigned Iowa Travel Guide is a great inspiration piece to encourage people to visit our state."

Investing in Iowa communities

While focusing on member-consumer needs, Iowa co-ops are dedicated to supporting the sustainable development of their communities. Encouraging local tourism – whether it's through placemaking or beautification efforts or supporting local restaurants and lodging options – is one way co-ops are living out the cooperative principle of Concern for Community.

The Iowa Tourism Office, part of the Iowa Economic Development Authority, works closely with



community partners (such as Iowa's electric co-ops), attractions and events to promote the state's beautifully vast scenery and unique history. Tourism in Iowa generated

\$1.8 billion in tax revenues in 2021, with more than \$1 billion supporting state and local governments while employing a total of 65,000 people statewide.



The free 140-page Spring/Summer Iowa Travel Guide can be ordered online at www.traveliowa.com, by phone at 800-345-IOWA or picked up at any of Iowa's Welcome Centers. An online version is also available.

What's New in 2023:
Historical, walking route and a celebration of Iowa food

Visit:
www.traveliowa.com

ENERGY-EFFICIENT FARMING EQUIPMENT

BY MIRANDA BOUTELLE

The importance of farms cannot be understated. Farmers feed our families and keep Iowa and the country running. But the business brings many challenges, including risk and uncertainty. Finding ways to use less energy can reduce costs and result in energy savings for years to come.

When looking to improve farm energy efficiency, consider the following areas.



Motors and pumps

Because motors and pumps account for a significant amount of

energy use on a farm, replacing inefficient motors with efficient models can save energy and reduce costs. Adding variable frequency drives (VFDs) allows you to vary the frequency and voltage supplied to the motor or pump to adjust the motor's speed. This saves kilowatt hours and reduces load by only operating at the needed capacity. VFDs can be used in place of a phase converter, which allows the use of three-phase power equipment where there is only access to single-phase power.



Irrigation

Upgrade irrigation equipment to use less water, which means less

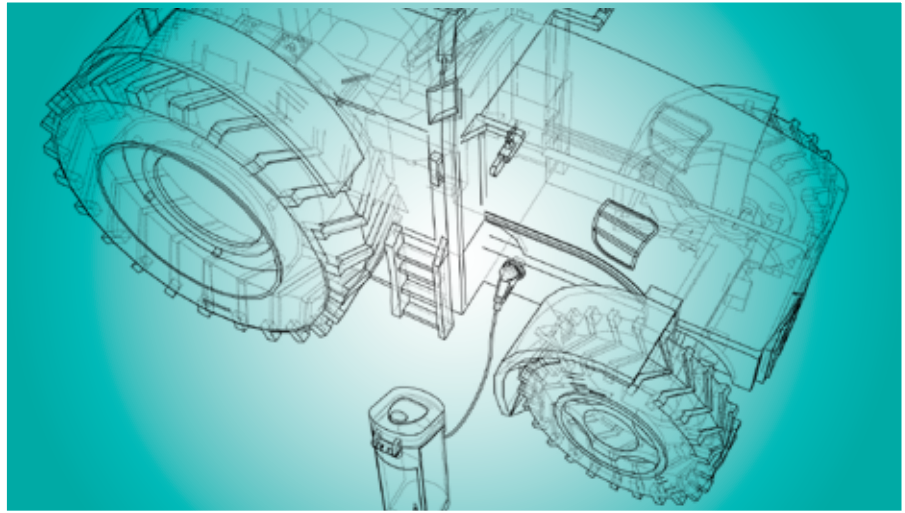
pumping and reducing the amount of water and energy consumed. The goal is to get the right amount of water where it is needed, which can be accomplished by reducing evaporation through system design and fixing leaks in the system. GPS and geographic information system technologies allow for more specific irrigation targeting. Monitor and test systems regularly to ensure maximum efficiency.



Lights

The longer lights are on, the higher the potential for savings. Prioritize

replacing incandescent or fluorescent exterior lighting on photocells or lights that stay on all night. LED lights



Variable frequency drives allow you to vary the frequency and voltage supplied to the motor or pump to adjust the motor's speed.



last two to four times longer than fluorescents and 25 to 35 times longer than incandescents. That means less frequent replacement, which saves on materials and labor costs.



Heater controls

In climates where engine block heaters are used to keep vehicle engines warm

enough to start, adding engine block heater controls with temperature sensors and timers will reduce electricity use. To keep water from freezing on farms with livestock, save energy by using stock tank heaters with thermostatic controls, which operate only when needed instead of running constantly. Insulated stock tanks may eliminate the need to heat water.



Emerging technology

New farming technologies that offer efficiency possibilities include

electric tractors, space heating and water heating. Equipment with

information technology capabilities can aid efficiency by monitoring conditions and automating farming tasks. As with home efficiency practices, consider the equipment used most and the savings potential from upgrading or modifying existing equipment.



Rebates

About 80% of U.S. farms are located in counties served by electric

cooperatives. Check with your local electric co-op to see if they offer rebates on farming equipment and energy-efficiency projects that help reduce energy use. Improving efficiency on the farm can result in less energy use, lower bills and improved farming success during challenging financial times.

Miranda Boutelle writes on energy efficiency topics for the National Rural Electric Cooperative Association, the national trade association representing more than 900 local electric cooperatives.

RAMBLIN' ON

BY DARCY DOUGHERTY MAULSBY

I've recently learned about survivor cars, which are an exceptional anomaly in the world of classic vehicles. A survivor car hasn't been altered since it was built and still has its original paint job, original interior and parts, and maybe even documentation about when and where it was first purchased.

There's something compelling about a survivor car. These are time machines, after all. When I found out my friend Steve Quick of Huxley owns one (a straight six 1961 Rambler Classic super sedan with 56,000 miles), I wanted to know all about it. More than a survivor car, this Rambler reflects a remarkable Iowa story that spans generations and geography.

A time machine to the 1960s

"I remember that car from the time I was about 13 years old," says Steve, a retired hardware store owner and current director with Consumers Energy Cooperative, based in Marshalltown.

The car's journey began around Memorial Day 1961 in Steve's hometown of Burlington. A couple from Wall Lake, Roy Frank and his wife Minnie (fondly known as "Grandma Min"), were visiting their son Don in Burlington. On May 31, 1961, the Franks decided to buy a new 1961 Rambler Classic from the Thomas Motor Company in Burlington, where Don had worked.

Thousands of Ramblers were manufactured during this era, and people either loved them or hated them, Steve says. While Ramblers weren't exciting, high-performance cars, they were a favorite of families and grandparents across America who appreciated their affordability and dependability.

In the early 1960s, Ramblers started around \$2,098 (about \$30,000 in today's dollars) for the four-door sedan.

"Everyone knew that seafoam green Rambler was Grandma Min's car,"



Steve Quick of Huxley owns a 1961 Rambler Classic super sedan, which is known as a survivor car.

says Warren Frank, Roy and Minnie's grandson and Steve's childhood friend. "The Rambler wasn't a showstopper, but it was a good, basic car."

The Rambler was always around each November when Warren and Steve visited the Franks and enjoyed pheasant hunting in the Wall Lake area when they were young teenagers.

Becoming a family heirloom

Grandma Min drove the Rambler for years before the car was passed along in 1981 to Don and his wife Ilene, who named the car "Hoopie" for some reason now lost to history. One time, when the Franks were driving their beloved Rambler around town, a Burlington police officer pulled them over for not wearing their seatbelts, Warren recalled. When the couple explained that the Rambler didn't have seatbelts, they avoided a ticket.

After Don died in 2005, Ilene became the Rambler's caretaker. Keeping history alive was a passion for Ilene,

who was a wealth of local genealogy, thanks to her nearly 50-year career as a hairdresser in Burlington and her volunteer work at the Des Moines County Historical Society.

Before Ilene died this year on Jan. 23, at age 96, she decided to sell the Rambler to Steve. It was a natural fit since he is such a car guy, says Warren, who now lives in the San Francisco Bay area. Ilene had known Steve all his life since his mother Margie had worked with Ilene at the West Hill Beauty Shop for years.

"The Rambler was always part of our family, but it means the world to me that Steve has it now," Warren says.

Steve plans to drive the Rambler in parades and classic car rides and exhibit it at car shows. No doubt the storied, seafoam-green sedan will stand out wherever it goes.

Darcy Dougherty Maulsby lives near her family's Century Farm northwest of Lake City. Visit her at www.darcymaulsby.com.

Visit our website at www.ieclmagazine.com



THE FUTURE IS BRIGHT

You inspire us to find solutions, so we can provide the energy and savings you need. Being part of a Touchstone Energy cooperative means we're always listening to make our communities a better place.

What's here today, has never been better. To learn more, visit TouchstoneEnergy.com

YOUR SOURCE OF POWER. AND INFORMATION.



Touchstone Energy®
Cooperatives